

THE BULBLET

VOLUME 30, NUMBER 1 SPRING 2015

HIGHLIGHTS

AGM

mail your lunch form- **now**

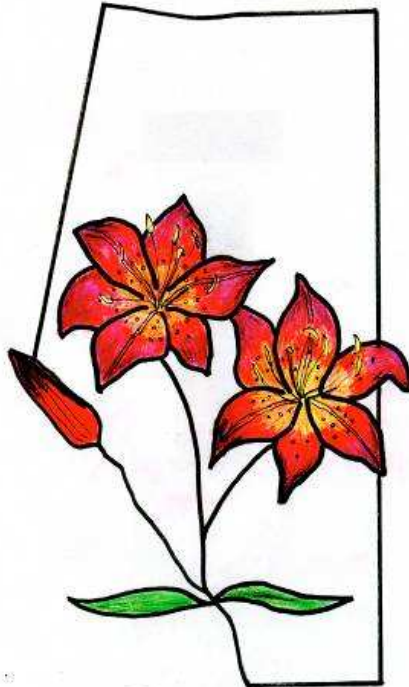
Elections

Spring Bulb list

Volunteers still needed for NALS show

Lily terms

Floral design descriptions



MEMBER BENEFITS

Members receive discounts at the following businesses:

- * **ALL SEASONS GARDEN CENTRE**. 10027-81 Ave. Edmonton 10% discount. Membership card must be presented and discount may not apply to all products.
- * **APACHE SEEDS LTD**. 10136 149 ST., EDMONTON 10% discount. Membership card must be presented and discount may not apply to all products.
- * **CANNOR NURSERIES LTD**. TWP RD 514 WOODBEND RD, SPRUCE GROVE (west of Devonian Gardens) 10% discount. Membership card must be presented and discount may not apply to all products.
- * **ELLERSLIE GIFT & GARDEN** 10330 Ellerslie Rd SW, Edmonton Membership card must be presented prior to purchase and discount may not apply to all products.
- * **VALLEY K LILY RANCH** aka plantlilies.com 15% discount on all bulb orders, excluding shipping. **Be sure to state you are an ARLS member and wish to receive the discount**, membership is verified with ARLS due to difficulty in showing member card via the internet, phone, etc. follow Valley K on Facebook

ARLS Affiliates

Alberta Horticultural Association icangarden.com/clubs/aha

Calgary Horticultural Society calhort.org

Edmonton Horticultural Society edmontonhort.com

North American Lily Society lilies.org

RHS Lily Group www.rhslilygroup.org/

RHS www.rhs.org.uk

THE BULBLET

VOLUME 30, NUMBER 1 SPRING 2015

Catherine Semeniuk Jan 1 1949- Dec 23 2014

The kitchen is silent. There are no sounds of baking or smells of coffee brewing on the stove. Gone is the sound of her laughter. There is no longer a comforting shoulder upon which to lay your troubles. She was our sunshine, and we are lost without her.

Raised in Edmonton, Alberta, Cathy was taken peacefully, but unexpectedly. Cathy is survived by Arnold, her loving husband of 47 years, son, daughters, and grandchildren. Cathy has been a member and volunteer with ARLS for many years. She clerks at the shows, did a 3 year term as Bulb Chair and was a sales leader at the Westmount bulb sale. She was always available to lend a helping hand and packing bulbs in Cathy's kitchen was a treat. Cathy could usually be found with one or both of her grand daughters, Ivy & Amethyst, at the lily shows. The sun was always shining when Cathy was around. She will be missed.

A celebration of life and love will be held at 2:00 pm in the afternoon on Saturday, April 18, 2015. This will take place at the Devon Community Centre, 20 Haven Avenue, Devon, AB. In lieu of flowers, please make a donation in her honour to the Heart and Stroke Foundation of Canada or to the Alberta Lung Association

Presidents Message

need these vacant positions filled:

Bulb Sale Chair- need someone with organizing skills there is a strong committee working here that just needs a leader. I already do the work of purchasing, labels and photo boards, and am a sales leader for one sale.

Advertising Chair- we give you a list of contacts you just make sure they are up to date with info- we can work on that.

Newsletter Editor- the newsletter has gone through 3 renditions since 2000. Each editor gets to put their own stamp on it.

Well life has certainly been interesting. I had to get Federal charity receipts out for end of February for another society so my schedule is pushed.

You should get this in time to mail your lunch form off directly. Hopefully we will get quorum for this meeting. I am standing for re-election but this is my last term so I would appreciate some interest from a future President so I can mentor the interested person(s).

Trying to keep up with the main positions plus all my committees is stressing my organizing talents to still get things out on time and find 'down time' to relax and do house-work. **What! Nothing a few more shots of espresso to keep awake will not cure.**

Anyway, my garden is just about uncovered and it will soon be time to assess what did come through the freeze thaw of this winter. I will plant lilies that did not make the fall planting and some of you may have pots of lily grass sitting around in your house, I have a few and am very happy I have not killed them yet, although I do have to get last years pots into the ground this year. I am still trying to get martagon seeds to sprout and live. I have managed to get most, not all, of my harvested seeds out of their pods and into envelopes uncandled.

good gardening, Laurie

THE BULBLET

VOLUME 30, NUMBER 1 SPRING 2015

Annual General Meeting- April 18 **Crestwood Hall 14325- 96 Ave**

The following positions are up for re-election.

Please let pres@arls-lilies.org know if you will be able to stand for re-election.

Bryan Bennett.

Laurie Hepper

Kathy Strawson

Britta Johnson

Adam Yakabuskie

Bill Mackay

Susanne Stack

Lorne Kaban

Also as the meeting is cut to 1 hour all reports must be submitted to Lorne for printing prior to the meeting. A report package will be available at the meeting.

meeting 10 - 11 am

11 am Sherrie Benson will talk on the Devonian Botanic Gardens and the lily beds.

A grooming workshop will be in the afternoon.

THANK YOU VOLUNTEERS FOR THE ARLS 2015 CASINO

JANUARY 31, 2015 AND February 1, 2015

Many, many thanks for your assistance in volunteering to take one or more shifts at our ARLS Casino. We all really put in a lot of work in an unusually busy casino. Any expenses that you incurred such as overnight accommodation should be forwarded to Britta Johnson.

The casino was \$15,000.00 down the first day and made a huge profit of \$77,000.00 by the end of the second day, which is more than twice the normal amount since most of the money (\$40,000.00 plus) comes from the slot machines. At the end of the quarter all the monies are split equally between all the groups who worked the casinos in the quarter. **On average your shift earns ARLS \$2000.00+/-.**

Volunteers followed by numbers of shifts:

Marie and Emmett Wenger- 1; Laurie Hepper- 1; Ieuan Evans- 2; Ann and Ken Owens- 1; Adam Yakabuskie- 2; Suzanna Durand- 2; Joe Ferreira- 2; Leo Krupka- 2; Wilf Maul- 1 [and was his birthday]; Maureen Bexon- 2; Sharon and Shauna Bury- 2; Dianne Skimming, sister Susan and husband Scott- 2; Bill McKay- 1; Lorne Kaban- 2; Britta Johnson- 1; Donna Coble-1; Judy Rybaczk-1; Terry Willoughby- 1; Cecilia Bertram- 1; Neil Lang- 1; Mike Danchak- 1; Kathy Strawson-1; Friends of mine Joan Seath and Cameron Stevenson- 1 each.

If I missed anyone of our excellent volunteers then I apologise in advance.

Sincerely, Dr. Ieuan R. Evans Casino Chair

THE BULBLET

VOLUME 30, NUMBER 1 SPRING 2015

CREATIVE FLORAL DESIGNS NALS 2015

Creative Floral Design is an art form in which creativity, imagination and originality are essential. Although the Creative Design Style does not have to follow a set pattern, it must like the Traditional Design Style adhere to the principles of design: balance, rhythm, contrast, dominance, proportion and scale.

Creative designs are designs OF space. Traditional designs are designs IN space. Designers create space within, around and about the components by using the organizational technique called interpenetration of space.

Interpenetration of space can be defined as the presence of space in and around and about the tangible components within the design.

For the Design Section of the NALS 2015 Show, all designs are to be done in the creative floral design style. Much of the information given here is drawn from the Handbook for Flower Shows published by the National Garden Clubs, Inc.

The **Waterfall Design** is characterized by a downward loose trailing flow of materials in a cascade style. Plant material flows from the centre of the design out and over the container's edge.

An **Angular Design** places an emphasis on angular components. The angles are not limited to one type and are arranged to enhance space. Contrast is essential to an interesting design so all components should not be angular or angles of the same type.

A **Reflective Design** is a creative design that containing some materials to involve the viewer through the use of reflection. A design in front of or on a mirror is not a Reflective Design. Broken pieces of mirror may be used as reflective components in the design as well as shiny metals, plastic and paper as an integral part of the design. One or more of the components must reflect image, light or motion and involve the viewer. The reflective is the creative part.

The **Spatial Thrust Design** is a creative design in which two parallel components of like material define a volume of equidistant vacant space and create a feeling of thrust. The thrusts may be horizontal, vertical or diagonal and one thrust may be longer to add interest to the design. The design may be created with or without a container/s. Plant material and other components may be added to the outer edges of the thrust lines to embellish the space but the space between the thrusts must remain vacant. This is not a parallel design.

The **Synergistic Design** is a creative design using a grouping of three or more containers, plant materials and/or other components sharing common characteristics designed to create an artistic whole with a minimum of two-thirds of them containing plant material or other components. Rhythm, balance, and harmony may be achieved with all units sharing common characteristics of colors, texture and forms and may be further unified with the use of connective/s. Individual units should be different and not appear like a complete design by themselves as all units combined create the complete design. Three types of material are usually used in - one line type material, one flower type and one foliage type. Containers may be on one level or some on bases. Connective material, if used, is best put in place in the area design is displayed.

THE BULBLET

VOLUME 30, NUMBER 1 SPRING 2015

A **Creative Line Mass Design** emphasizes plant material and other components. The tangible components, not space, dominate the design. Like materials are grouped and placed next to different like groupings in a design that may have a degree of abstraction. Multiple points of emergence may be included. In a **Creative Vertical Line- Mass Design** dominant movement is vertically upward or downward and may have more than one focal area, but the focal areas must not destroy the vertical movement.

Type any of these into search: to find information on line: creative floral designs contemporary floral designing of the design types - e.g.: spatial thrust designs, reflective floral designs, etc.

To reserve your NALS2015 show design space contact bertramc@telus.net

Speakers

If you have any suggestions on what you would like to have for the fall 2015 AGM workshop/ speaker/ presentation please contact Terry, Bill or Laurie, your speaker committee, with your suggestions so we may pursue them. Your suggestions allow us to know what our members want to know or learn.

MORE SHOW NEWS- NALS2015 DESIGN and DÉCOR REQUEST

Cecilia Bertram

The Design and Décor Sections of the NALS2015 Show and Symposium require many lilies and greens for the NALS Show in Calgary, AB July 17 – 19th. We would like to offer out of town designers some lilies to do their designs and we require lilies, small filler flowers and greens for the floral arrangements for the reception, banquets and for displays throughout the show venue.

We ask our ARLS members and anyone with extra lilies to please donate them to the Show.

Cecilia Bertram will be available to accept your offerings at the Sheraton Cavalier Hotel on Tuesday, July 14 from 3 pm to 8 pm and on Wednesday morning from 7 am to 1 pm.

If you know in advance that you will be able to make a donation please let me know at bertramc@telus.net or (780) 469-1085.

Thank you for assisting ARLS in helping to make the Show a welcoming sight and a success.

Name tags

For those members who ordered name tags the order went in so you should be able to pick them up at the AGM.

Newsletter deadline May 15 for June 1 Bulblet

Get your information in to news@arls-lilies.org or blackmartagon@gmail.com hopefully we will have a Newsletter Editor by then.

THE BULBLET

VOLUME 30, NUMBER 1 SPRING 2015

RHS Lily Group & NALS news

NALS 2014 show awards for ARLS members. Congratulations to these members who 'grow & show'.

Brian Bergman brought home the **Jean Ericksen Award** for Best Pink seedling in Section C with A-18-10 sdlg leaun Evans carted home the;

David Griffiths Award Best stem of unnamed hybrid grown from seed by exhibitor with a martagon seedling

Claude Shride Award for Best hybrid lily of martagon derivation with a martagon seedling

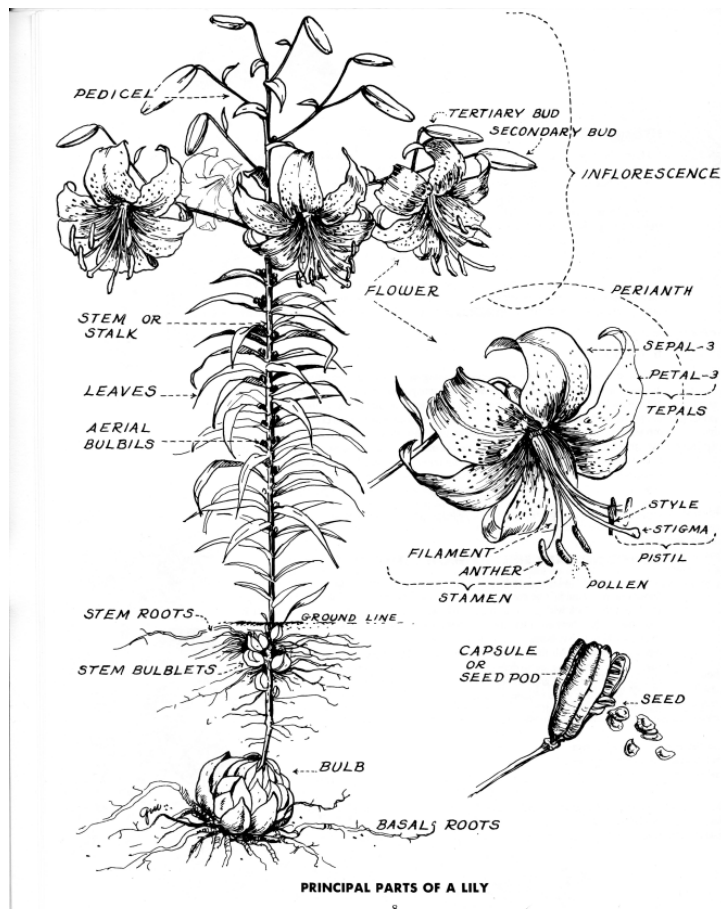
Fred Tarlton Award for the first place stem with highest bud count with a martagon seedling

Ed Robinson Award Collection of 3 martagon hybrid lilies with 3 martagon seedlings

Brian Bergman Sweepstakes Award for 19 first place ribbons

Lily abbreviations and some terms for beginners

The information given here is **generalized**, aimed at anyone wanting to learn to speak "lilium" or, at least, to understand the jargon. It has come from many sources, gleaned over the years. More specific information can be found on the Internet, and the handbook, "How to Grow Lilies", published by the North American Lily Society and available through the Alberta Regional Society, is a great resource.



I. or L. Stands for *lilium*, the Latin term for *lily*. For example, I. "Fata Morgana"

Bulbil A small ball attached to the stem of the lily, at the base of the leaf. If planted, it will produce a lily seedling and become a bulblet.

Bulblet An underground "baby" bulb. May be loose or growing from the stem, from the base of the bulb, or from a scale.

Scale Lily bulbs are made up of scales, which are all attached together at the base of the bulb. Each scale has the potential to produce new bulblets.

Lily divisions separate lilies into groups. There are nine main divisions, named with a roman numerals for 1 to 9, though 3, 4, and 5 are generally not seen in Canada.

I *Asiatics* – Easy to grow, hardy, few are fragrant, wide range of colors and styles.

II *Martagon hybrids*– Prefer part shade; flowers are down-facing and pyramid-like in shape. Fragrance is less remarkable.

VI *Trumpets and Aurelians* – less hardy, but do well with extra protection over the winter

VII *Oriental*s – large flowers, most fragrant, least hardy.

VIII *Interdivisional Hybrids* – lilies bred from more than 1 division. For example, *illustration from Let's Grow lilies*

THE BULBLET

VOLUME 30, NUMBER 1 SPRING 2015

OT - Oriental-Trumpet
LA – Longiflorum-Asiatic
LO – Longiflorum-Oriental
OA – Oriental-Asiatic
AA – Asiatic-Aurelian

New combinations are being tried, with some successes. In general, it is difficult to hybridize between divisions.

IX *Species* - lilies that occur naturally in the wild. They can vary by region but are genetically alike. For example,
L. philadelphicum, also known as the Western Red Lily, floral emblem of Saskatchewan
L. regale, commonly used as Easter lilies

When buying lily bulbs, you will often see these abbreviations:

For bloom time:

E = early season (late June, early July)

M = mid-season (July)

L = late season (late July, August until frost)

Plant Heights are usually specified, but not always:

Pot = *Border* = dwarf = short, usually under 60cm (2 feet)

M = medium = between 60 and 90cm (2-3 feet)

T = Tall = 90 cm and up (3 feet +)

The orientation of the lily bloom is also usually abbreviated. Orientation refers to the direction in which the lily bloom faces. They are represented by the letters a, b, and c. and the letters may be combined. Other notations are sometimes used but the most common ones are:

a = up-facing - – blooms face the sky

b = out-facing - blooms face out to the side

c = down-facing – blooms face the ground

ab = up- and out-facing

bc = out- and down-facing

FAQs

How deep should I plant my lily bulbs?

Planting depth is usually 2-3 times the height of the bulb. If your soil is compact and hard, plant less deeply; if very loose, dig down further.

What does the bulb do?

The bulb stores all of the nutrition that a lily needs in order to grow and prepare for the next growing season. The bulb stores this nutrition after the flowering, and the bulb grows over the hibernation season. If the bulb does not have enough time to store enough nutrients before winter begins, it may not survive. This is why late flowering lily varieties, such as Orientals and Orienpets do not do as well in our climate.

Which bulb should I choose?

Bulb size varies greatly between plants and regions they come from. The bigger bulb is not necessarily a better bulb. Some bulbs are naturally small, so check that they look healthy, not huge. The bulb should feel firm and not have

THE BULBLET

VOLUME 30, NUMBER 1 SPRING 2015

mould, rot, or wormholes. It should not have a putrid color or odour. The scales should sit fairly tightly together. Buy from a reputable seller.

Why are the Martagons so expensive?

From seed, a Martagon will take seven years to mature to the flowering stage, and most Martagon bulbs do not multiply quickly. It will take a few seasons more until the bulb comes to mature size. Once your Martagon is established, it will live many, many years and will be the hardiest of the lilies in your garden, and probably the most graceful too.

What can I do about the red lily beetle (rlb)?

The beetle is here to stay, unfortunately, so we need to learn to deal with it.

The most environmentally-friendly and effective way to deal with it is to pick and squish any adult beetles, and clear the eggs and larvae off the leaves diligently. This may mean checking twice a day, because the beetles are fast and they can fly. When they drop, they fall on their backs, leaving their black bellies exposed. However, this does not help, as it makes them difficult to see. Know that if you see one, there ARE more around, even if you cannot find them. Keep a sharp eye out. If you can remove all the adults, larvae, and eggs, you should get a respite from the beetle hunt until the next wave comes, or a new one flies in. With some luck, the next wave may not happen in your garden. There is hope on the horizon. The parasitic wasp trials are showing progress, but at best, they will control the red lily beetle population, not eradicate it. There are some other green solutions that some people say are effective, but they have not been proven yet, though they may be worth a try.

Some insecticides are also effective but are not recommended because of the danger to you, children, and pets; they are non-selective so they destroy all insects, including the beneficial ones such as bees, butterflies, and ladybugs. Do not risk contamination by using insecticide near food crops.

What is hybridizing or breeding?

It is the attempt to combine features of one lily with the features of a different lily or lilies to produce another lily with the features you want and none of the features you don't want. The new lily is then called a *seedling*. Many seedlings get rejected before the hybridizer finds a combination of features that he or she is satisfied with. If the seedling proves to be consistent over time, it may be *registered*. The entire process takes years and accounts for the higher prices of new lilies, as fewer are commercially available at first. Also, many new hybrids come out of the same breeding programs, as the possibilities of each match-up can be extensive.

What is tissue culture?

Essentially, tissue culture is a cloning method. It is used to produce bulbs faster than Mother Nature can, as well as to produce new bulbs that will be identical to the original. Some bulbs will not produce the same lily in the second or subsequent generation of the breeding process, or does not consistently produce the desired result.

There are many books and websites on the subject of lilies, as well as many societies dedicated to lilies. ARLS has a library of books available for its members to sign out and a list of books available for sale, including "How to Grow Lilies". Ask about other titles.

THE BULBLET

VOLUME 30, NUMBER 1 SPRING 2015

LILY NEWS

FRED FELLNER RECOGNITION AUGUST 6, 2014

Vermilion Area Garden Club

Fred Fellner was inspired to grow Asiatic lilies after he met Robert Simonet, who was studying the principles of genetics in plant breeding. Fred acquired the knowledge of plant breeding and improvement from Robert and took up the hobby of hybridizing lilies in the early seventies.

Starting with a small lily plot on his farm (SE 01 TWP 52 R 8 W4), it quickly grew into several acres. His lily plots got bigger and his barley field became smaller.

For most of his life, Fred has grown lilies and also developed many new lily cultivars. He grows approximately 5000 lily seedlings yearly. Several years ago he grew up to 10,000 every year! He is slowing down a bit and instead of 30,000, he now has 20,000 lilies rotating continuously in his fields. He has plots with first year seedlings, second year growth and third year plants from which he selects the best flowers for further study. Hybridizing is a long-term process, an art that requires patience. It takes four to five year cycles to get the lily you want. Then it takes eight to ten years to multiply that special lily. An extensive record keeping is required for all the crossings.

Fred has shown his lilies at numerous shows and won many prizes. He has registered more than 50 lilies with the RHS (Royal Horticulture Society in England). His first registered lily was "Honey Pink" and is now focusing on lilies like "Baby Pink Bells" which resembles a Fritillaria, and also on double flowering plants which have very sturdy stems.

Fred received the E.H. Wilson Award for promotion and betterment of Lilies from the North American Lily Society, which is their highest award and the "Centennial Gold Medal" from the Alberta Horticultural Association. The Alberta Regional Lily Society (ARLS) has sponsored the "Fred Fellner Lily Project" which is dedicated to the collection of the many lilies (50+) he has bred and are planted in a special bed on his farm.

A representation of some of his lilies are thriving in the lily bed at the Vermilion Tourist Information Centre where Fred and Al Burnett's commitment to the genus and lily involvement worldwide are recognized.

Congratulations on a lifetime of enthusiastic sharing, hard work and devotion to the genus liliium!! Instead of giving Fred a recognition gift at the "Fred Fellner Recognition and Lily Field Tour", on August 6, 2014, the Vermilion Area Garden Club submitted a donation of \$100.00 to the Alberta Regional Lily Society to acknowledge his continuous contributions in enhancing the beautiful lily!

The Alberta Regional Lily Society gratefully accepts this recognition on behalf of Fred. Thank you Fred for opening your gardens for the pleasure of fellow gardeners.

Devonian Botanic Garden news

The Gardens have a volunteer organizer now that you **must** register with to be on the grounds, this allows them to track for liability. Volunteers will be scheduled in groups for beds so that supervision can be targeted to an area and plant cataloguing can be accurate. If you visit and have a concern about the lily beds call Arnold Semeniuk, DBG liaison.

Events at the garden: check out the website for all events. www.Devonian.ualberta.ca

Twitter @DevonianGarden; **Facebook** DevonianBotanicGarden

THE BULBLET

VOLUME 30, NUMBER 1 SPRING 2015

Beetle Musings

lilybeetle@arls-lilies.org Report your invasion.

Hopefully there are no new sightings as I have not received any new reports of the nasty red pest. Start looking as soon as the lilies poke their noses out.

Judges School- cancelled

To: South Saskatchewan Lily Society's Membership

From: The Educational Committee

Re: The Cancellation of the 2015 Judges School SLS Annual Meeting, Saturday March 21, 9:00 a.m.

It is necessary to cancel the Judges School which was to be held on March 21 & 22 due to lack of students interest. Those of you who sent funds to cover the cost will be reimbursed.

We did have a good number interested in auditing the instruction so in future we may try to support a refresher workshop for judging and exhibiting. We shall keep you posted if this educational opportunity becomes available.

The South Saskatchewan Lily Society's Annual General Meeting will be held on Saturday, March 21 at 9:00 a.m. This will take place at the East View Community Centre at 615- 6th Avenue .

We do need your attendance at this meeting to approve the 2015 officers, budget and programs. Following the annual meeting there will be an educational program related to 'Lily Hybridization'. This will be followed by lunch.

Classifieds by members

Order Lilies-----Olds College Centennial lilies hybridized in Alberta by ARLS members.

For ordering information go to: <http://www.oldscollge.ca/onlinestore/#flowers>

or to purchase, contact: Karen Viney 403-556-468

Mark your calendar

Bulb sales for spring

Bonnyville Gardeners Day April 11

Calgary Horticultural Society Spring Gardeners Show April 11 & 12

Dianne Skimming is Sales leader contact her if you would like to help with this fun event.

AGM will have some bulbs- pot some up and bring to NALS show.

EHS May 25

Fulton Place May 30

Bulb Sales for fall- unconfirmed

Sept 24 St Andrews

Sept 27 Muttart

Sept 28 EHS meeting

Greenland Garden Centre

Oct 17 SAGM Woodvale

Members receive a 10% discount on purchases.

THE BULBLET

VOLUME 30, NUMBER 1 SPRING 2015

The opportunity to volunteer helping with sales and preparation, entitles you to reserve bulbs in advance of the sales! Other sales may be organized check our media for updates

General Membership Meeting Dates:

ARLS ANNUAL GENERAL MEETING SPRING 2015

April 18, 2015 Crestwood Hall, Edmonton 14325- 96 Ave (nearest bus on 142 street)
AGM Meeting 10:00 am, Devonian Lily Beds seminar 11 am, Lunch Lily Grooming workshop 2 - 4 pm
non-members - \$5.00 to attend seminar, members - no charge

ARLS SEMI-ANNUAL GENERAL MEETING FALL 2015

October 17, 2015 Woodvale Hall on the Millwoods Golf Course , Edmonton (nearest bus on 50th Street)
Meeting 10:00 am, Awards 11:00 am , Lunch, Seminars & workshops
non-members - \$5.00 to attend seminars, members - no charge

ARLS ANNUAL GENERAL MEETING SPRING 2016

April 16, 2016 Woodvale Hall on the Millwoods Golf Course, Edmonton (nearest bus on 50th Street)
AGM Meeting 10- 11 am followed by seminars & lunch & workshops
non-members - \$5.00 to attend seminars, members - no charge

ARLS SEMI-ANNUAL GENERAL MEETING FALL 2016

October 15, 2016 Woodvale Hall on the Millwoods Golf Course , Edmonton (nearest bus on 50th Street)
AGM Meeting 10 – 11 am Awards 11 am followed by lunch seminars & workshops

SHOWS 2015

ARLS 20TH ANNUAL MARTAGON SHOW July 4 & 5 2015

Devonian Gardens Hwy 60 Spruce Grove

Sat 1- 5 pm & Sun 10 am – 5 pm (Friday night entries accepted)

general garden admission applies to attendees

Stem entrants contact the Show chair for free admission details.

This year potted martagons will be looking for new homes.

For information contact the martagon show chair

Lorne Kaban 780-812-3533 dlkaban@hotmail.com

Board meetings 2015

May 24 **10 am - noon** IHotel, Red Deer – **noon – 3** the NALS2015 Committee meets

August 9 **10 am** Greenland Garden Tour noon at Cecilia's for Lunch & meeting

Nov 22 Conference call **1- 3 pm**

**THE ALBERTA REGIONAL LILY SOCIETY
NEWSLETTER**

THE BULBLET

VOLUME 30, NUMBER 1 SPRING 2015

Directors

PRESIDENT

Laurie Hepper (to 2015)
Edmonton
Phone 780.455.0434
pres@arls-lilies.org

VICE PRESIDENT

Bill Mackay (to 2015)
Innisfail
Phone 403.227.3563
vice@arls-lilies.org

PASTPRESIDENT

Vacant

SECRETARY

Lorne Kaban (to 2015)
Bonnyville
Phone 780.812.3533
sec@arls-lilies.org

TREASURER & MEMBERSHIP

Britta Johnson (to 2015)
Edmonton
Phone 780. 433.7869
treasurer@arls-lilies.org

DIRECTORS

Cecilia Bertram (to 2016)
Edmonton Phone 780.469.1085
bertramc@telus.net

Mike Danchak (to 2016)
Edmonton
Phone 780.462.0615
mikedanchak@yahoo.ca

Ieuan Evans (to 2016)
Spruce Grove
Phone 780.987.4398
ieuan@tbwifi.ca

Dianne Skimming (to 2016)
Calgary
Phone 403.274.4747
dskimm@shaw.ca

Bryan Bennett (to 2015)
Innisfail
Phone 403.227.5178
legman@telusplanet.net

Suzanne Stack (to 2015)
Gibbons
Phone 780.710.0775
sueingabs@gmail.com

Kathy Strawson (to 2015)
Edmonton
Phone 780.452.9741
kstrawson@gmail.com

Adam Yakabuskie (to 2015)
Calgary
Phone 403.244.9073
martagon@shaw.ca

LIBRARIAN

Terry Willoughby (Board Appointed-to 2015)
Spruce Grove
Phone 780.968.1818
library@arls-lilies.org

WEB EDITOR

Shauna Willoughby (Board Appointed-to 2015)
Spruce Grove
Phone 780.968.1818
webeditor@arls-lilies.org

Newsletter editor

vacant
news@arls-lilies.org

Bulb Sale Chair- **Vacant**
Advertising & Public Relations- **Vacant**
Publishing Committee Chair Shauna Willoughby
Venue Coordinator- Laurie Hepper
Membership Chair- Britta Johnson
Web Committee Chair- Bill Mackay
OLDS College Committee Chair- Bill MacKay
Devonian Gardens Committee Chair- Arnold Semeniuk
AGLC-GAIN Funding Chair- Laurie Hepper
Casino Chair -Ieuan Evans
NALS Liaison -Shauna Willoughby

**THE ALBERTA REGIONAL LILY SOCIETY
NEWSLETTER**

THE BULBLET

VOLUME 30, NUMBER 1 SPRING 2015



**NALS 68TH INTERNATIONAL SYMPOSIUM July 15 thru
19 2015**

Facebook [NALS-2015-Calgary](https://www.facebook.com/NALS-2015-Calgary) www.NALS2015.com

Lily Show July 17, 18 & 19 2015

Thursday entries accepted 2 - 11 pm

Friday morning entries accepted 6:30 until 8:30 am

You don't have to be a NALS member to enter the horticultural or design sections so think about entering, perhaps you can send stems down with someone attending if you can't be there yourself.

Public Show times:

FRIDAY JULY 17 2 pm - 6 pm

SATURDAY JULY 18 9 am - 5 pm

SUNDAY JULY 19 9 am - 3 pm

'Celebrating Alberta Lily Hybridizers'

Design Section theme ALBERTA SCENE IN LILIES

SHERATON CAVALIER CALGARY HOTEL www.sheratoncavaliercalgary.com

2620- 32 Avenue NE Calgary Alberta T1Y 6B8

Ph: (403) 291-0107

**Reservations <https://www.starwoodmeeting.com/book/NALS2015> or
I-888 627-8044 mention NALS SHOW for special show rate. \$149.00**

If you are in the area the exit is one south of McKnight exit turn East, hotel is on 32nd & Barlow Trail NW. The conference area is all on the main level all wheelchair accessible.

NALS 2015 show committee: We still have vacancies on the committee. Graphics, Catering liaison, Photo contest liaison are some positions needing to be filled. Many of the other positions would like to have help with their tasks. Time commitments vary.

Consider taking out a NALS membership to help support our parent society. www.lilies.org

Volunteers gladly welcomed.

To volunteer

Show Chair

NALS Show entry tags

Floral Design advance entry booking

Photo contest entry

Dianne Skimming 587-284-2284 dskimm@shaw.ca

Adam Yakabuskie martagon@shaw.ca

Lorne Kaban 780-812-3533 dlkaban@hotmail.com

Cecilia Bertram 780-469-1085 bertramc@telus.net

Frans Officer fofficer2@yahoo.com

THE ALBERTA REGIONAL LILY SOCIETY
NEWSLETTER

THE BULBLET

VOLUME 30, NUMBER 1 SPRING 2015

Lilies for beginners by Dan Dale (reprinted from The Bulblet Vol 1 No 1 Jan 1986)

The Alberta Regional Lily Society is now a reality and we are planning periodic bulletins. I thought it might be a help to people who are just getting started to suggest a few lilies that they might enjoy. I have a list of 10 asiatics that should do well for most:

Enchantment, Byam's Ruby, Edith Cecilia, Erlibird, Amulet, Gold Lode, Snowbird, White Picture & Connecticut Beauty.

Now if you would like something different and have a little patience, you could try some martagons. They resent being moved and often don't bloom the first year after planting, but by the time they are 3 years old [*have 3 growing years in your garden*] they should carry 30 to 40 blooms on one stem. Generally, they are more expensive, but I will list 3 older ones which should be available and reasonable; Dalhansonii (mahogany), Brocade (yellow with pink reverse), Mrs Backhouse (yellow with spots) These are varieties have been around 75 years or so, but they are still very good for Alberta Gardens. Now if you would like something exotic, you might try a trumpet lily: Pink Perfection, Golden Splendor, or Thunderbolt (orange). If you want to try one of the latest fads get a brush-marked lily. They are plain coloured with what appears to be a paint brush mark of a different colour in the centre of each petal. Accent and Impact are two of this type which are available. I hope we have helped you decide and wish you success.

addendum 29 years later

Edith Cecilia is a very good hybridizing parent.

White Picture & Connecticut Beauty have graced recent bulb sales.

The beginner martagons to try are I. Dalhansonii, Claude Shride and any of the Backhouse hybrids as the bulbs are easily acquired and have become inexpensive. The only advise for martagons is to pick a spot that you want them to be in for a very long time. And they like shade so you can plant them where other lilies may not like to be.

The brushmarked lilies have been replaced by the tango 'fad'. There is one brushmark though that is a stand out even today. Purple Reign is an outstanding garden lily, but make sure you get the original Purple Reign and not the new Patricia's Pride as it does not have the staying qualities of the original.

The new tango lilies are diverse and have stunning colour combinations. For exotics try any of the many interdivisional crosses being offered some of them are pricy as they have to go through embryo rescue and tissue culture to exist, and you have to track some of the hybridizers down to acquire a bulblet.

