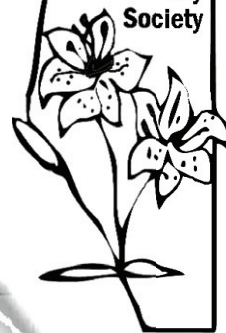


# The Bulblet

VOLUME 28, NUMBER 1

SPRING 2013

Alberta  
Regional  
Lily  
Society



Lucky winners  
holding the prize  
they each won on  
February 3.

Top left, clockwise:  
*Susanna Durand,*  
*Shauna Willoughby,*  
*Maureen Bexson,*  
*Marie Wenger.*  
Center:  
*Laurie Hepper*



## Photos from the Winter Mingle

*All photos copyright Cecilia Bertram*

# Board of Directors



## PRESIDENT

Laurie Hepper (to 2013)  
9739 146 ST, Edmonton AB T5J 2Z3  
Phone 780.455.0434  
pres@arls-lilies.org

## VICE PRESIDENT

Bill Mackay (to 2013)  
Box 6262 Innisfail, AB T4G 1S9  
Phone 403.227.3563  
vice@arls-lilies.org

## PAST PRESIDENT

Kevin Frey (to 2013)  
Box 32, Site 103, RR 1 Stony Plain AB T7Z 1X1  
Phone 780.968.9199  
pastpres@arls-lilies.org

## SECRETARY

Lorne Kaban (to 2013)  
Box 7492, Bonnyville AB  
T9N 2H8  
Phone 780.812.3533  
sec@arls-lilies.org

## TREASURER & MEMBERSHIP

Britta Johnson (to 2013)  
9107 -73 Ave, Edmonton AB T6E 1A5  
Phone 780. 433.7869  
treasurer@arls-lilies.org

## DIRECTORS

Cecilia Bertram (to 2014)  
9716 67A St Edmonton AB T6B 1S2  
Phone 780.469.1085  
bertramc@telus.net

Bryan Bennett (to 2013)  
52230 40 St Close, Innisfail AB T4G 1G5  
Phone 403.227.5178  
legman@telusplanet.net

Mike Danchak (to 2014)  
8823 - 41 Avenue, Edmonton AB T6K 1G6  
Phone 780.462.0615  
mikedanchak@yahoo.ca

## leuan Evans (to 2014)

127 27019 TWP RD 514, Spruce Grove AB  
T7Y 1G5  
Phone 780.987.4398  
ieuan@tbwifi.ca

## Arnold Semeniuk (to 2014)

12, 27005 TWP RD 511, Spruce Grove AB  
T7Y 1G8  
Phone 780.987.4763

## Kathy Strawson (to 2013)

14312 106B Ave, Edmonton AB T5N 1E9  
Phone 780.452.9741  
kstrawson@gmail.com

## Adam Yakabuskie (to 2013)

235 Prestwick Mews SW, Calgary AB T2Z 3X7  
Phone 403.244.9073  
martagon@shaw.ca

## LIBRARIAN

Terry Willoughby (Board Appointed)  
3, 54029 RR 275 Spruce Grove AB T7X 3S6  
Phone 780.968.1818  
library@arls-lilies.org

## WEB EDITOR

Shauna Willoughby (Board Appointed)  
3, 54029 RR 275 Spruce Grove AB T7X 3S6  
Phone 780.968.1818  
webeditor@arls-lilies.org

## NEWSLETTER EDITOR

Lynnette Westfall (Board Appointed)  
RR 1, Edberg AB T0B 1J0  
Phone 780.877.2547 Fax 780.877.2540  
tech@arls-lilies.org or news@arls-lilies.org

*Volunteers are  
always needed  
to help with or  
manage various  
projects - call a  
director today if  
you can help in any  
way!*

## Future BOD Meeting Dates:

2013 May 26, Aug 11, Nov 24  
\* Aug 11 - 11 AM garden tour, potluck 1- 4 pm  
\* Nov 24 - teleconference

## General Meeting Dates:

Annual General Meeting April 20, 2013  
Semi Annual General Meeting Oct. 19, 2013





# Editor's Notes

Greetings to our members, old and new! How is winter treating you? I bet you've spent plenty of time perusing new garden catalogs and dreaming of plans for your garden this spring and summer!

I've included a short article in regards to **soil and planting bulbs** in hopes that someone can learn from my mistakes. I've made more than a few for sure but last spring I made a big one that had me biting my nails all summer long. The bed I put in jeopardy contained many heritage Canadian lilies and I don't want to lose any of them!

You will find a great article on **Floral Design** sent in by **Cecilia (p.12)**, our Floral Design Show Chair this year. **A sneak peak at the Design section of the Annual Show Schedule is also included** to give you extra time to think about and work on the designs you plan to enter in our show later this summer. You ARE going to enter a design aren't you? Don't be shy, you can do it!

My final words once again are in regards to the **Casino** (details p. 11), be sure to read **what this upcoming fundraiser covers in expenses** for our organization - if we do not receive enough volunteers for this event we will be forced to drop it as a fundraiser in future so please consider volunteering if you can. Until next time...

Lynnette Westfall



Next newsletter due out in JUNE  
Submissions deadline May 15.

Your contributions be they small or large are most welcome!



## MARTAGON SHOW

July 6 & 7, 2013

Devonian Botanic Gardens  
Devon, AB

- \* show entrants do not pay admission
- \* Show Chair Lorne Kaban

## ANNUAL SHOW

July 20 & 21, 2013

Central Lions Club  
Edmonton, AB

- \* free admission
- \* entries accepted Friday evening & Saturday morning
- \* Show Chair Kathy Strawson
- \* Design Chair Cecilia Bertram

# President's Message



## From the desk of the President to the membership MARCH 2013

I sit down today and realize I have not made any notes over the winter. I am happy we have lots of snow cover, not so happy with the temperature fluctuations. The Winter Mingle is come and gone and the floral workshop was very good and has given the ones that attended some good ideas that should be appreciated as Cecilia has managed to get a great judge for the Annual Show. She judges in the floral industry so will appreciate the modern designs our members are entering. Hopefully, many more designs will be entered. We have a larger room to have our show this year; in the Gymnasium in the north wing of the Central Lions Centre so I hope the public comes to the north entrance, we will have to have great signage. We plan to have a floral design workshop during the Annual Show so participants will be able to make and take home a design. Details will be in the next newsletter.

We are working on getting out the schedule for speakers and are excited to think about whom we can contact for the NALS convention.

ARLS, as always, has the booth at the Calgary Horticulture Spring 2013 Garden Show and will sell bulbs to those lucky enough to get there first. We are going to be at the Bonnyville Gardeners Day Event and may be at others- too soon to tell.

Hopefully your lily seeds are sprouting indoors, the cats are not digging up your bulbs and the deer and rabbits stay away from your shoots.

And remember report a sighting [lilybeetle@arls-lilies.org](mailto:lilybeetle@arls-lilies.org) it is in your ALBERTA. It is in Edmonton, Olds, Calgary and other places. Inspect your lilies regularly.

Best Regards and good growing,  
Laurie



# MEMBERS - NEED TO KNOW INFO

## 2013 BULB SALES

### BONNYVILLE GARDENERS DAY

April 6  
St. Louis Parish Hall  
Bonnyville

### CALGARY HORTICULTURAL SOCIETY Spring Show At Spruce Meadows

April 13 & 14  
18011 Spruce Meadows Way SW  
Calgary

### PRIMAVERA BIG GARDEN SHOW

May 15 10 AM - 4 PM  
Santa Maria Goretti Centre  
11050 - 90 Street Edmonton

### WESTMOUNT FARMERS MARKET

Sept. 26, 10 AM - 5 PM  
111 Ave & Groat Road, Edmonton

### EDMONTON HORTICULTURAL SOCIETY (EHS)

Sept. 30, 6:30 PM - 8:30 PM  
11113 - 113 Street Edmonton

### MUTTART CONSERVATORY

Sept. (TBA) 10 AM - 5 PM  
9626 96A Street NW Edmonton

\*\*\*please note dates & venues are subject  
to change all are not confirmed yet

## ST. ALBERT BOTANIC GARDENS

holds educational seminars. This year they are working on presenting a lily seminar. If it goes well they may invite ARLS back to present more Liliaceae information. **Contact the garden for more information on their educational series.**

## MEMBER BENEFITS

Members receive discounts at the following businesses:

\* ALL SEASONS GARDEN CENTRE. 10027-81 AVE. EDMONTON 10% discount. Membership card must be presented and discount may not apply to all products.

\* APACHE SEEDS LTD. 10136 149 ST., EDMONTON 10% discount. Membership card must be presented and discount may not apply to all products.

\* CANNOR NURSERIES LTD. TWP RD 514 WOODBEND RD, SPRUCE GROVE (west of Devonian Gardens) 10% discount. Membership card must be presented and discount may not apply to all products.

\* ELLERSLIE GIFT & GARDEN 10330 Ellerslie Rd SW, Edmonton Membership card must be presented prior to purchase and discount may not apply to all products.

\* VALLEY K LILY RANCH AKA plantlilies.com 15% discount on all bulb orders, excluding shipping. **Be sure to state you are an ARLS member and wish to receive the discount**, membership is verified with ARLS due to difficulty in showing member card via internet, phone, etc.

## ARLS Seminars

Seminars and workshops are planned for each spring and fall, typically they start immediately after the general meeting. Members attend seminars free of charge, guests and non-members must pay \$5.00 each. Check the web site for most accurate information.

## ARLS Bulb Sales

Members receive a 10% discount on purchases as well as the opportunity to volunteer helping with sales and preparation, which entitles you to reserve bulbs in advance of the sales.

# LESSONS LEARNED

*submitted by Lynnette Westfall*

There is one thing all experienced lily growers will agree to and that is the necessity for good drainage around the bulbs. Lilies need plenty of moisture at the roots during growth periods but **excess water at any time especially in winter and early spring may cause bulbs to rot** in a very short time.

Ideally a bed should be prepared at least 6 weeks before planting, but most of us get it done just prior to planting. The ground should be dug and loosened then mixed well with WELL rotted manure, leaf mould, peat moss and fertilizer. **If the native soil is heavy and drainage is poor, adding coarse sand improves texture and drainage.** I add sand regardless, the reward is beautiful, healthy roots in abundance and we all know roots are the basis for strong growing plants. I dislike digging, so my beds are all raised by bringing in loads of soil and spreading them 30 cm high on top of the native ground. **The very best soil for lilies would be a sandy loam**, if you have this consider yourself blessed!



A strong word of caution for you - **DO NOT USE RAW OR FRESH MANURE** in your bulb planting areas. You can see on the left the damage I caused by planting too soon in a bed which contained rotted manure. I thought it had been aged enough given **it was 5 years since it was mixed** into the end of this bed, and although bulbs grew well here in 2011, when I added commercial fertilizer at the same maintenance rate given to the rest of the bed in spring 2012, it was just too much for the lilies at that end. Within 2 weeks it was extremely noticeable when looking at the bed overall, since one end showed very yellowed and mottled stems and the damaged stems stopped right where the manure stopped. **Symptoms looked very much like virus, as do many nutrient over-doses and deficiencies with plants.** Heavy leaching and application of Epsom Salts allowed the stems to recover a

great deal before the end of summer 2012, but I still fear permanent damage. I am eager to see how they grow this year for sure!

**Plant your bulbs deep and you will have much less trouble with temperature fluctuation in winter and summer**, resulting in less damage from frost or drought. This damage often happens with bulbs grown too near the surface. This is especially important for stem-rooting varieties. In spring these deeply planted bulbs will be slower to reach the surface but this delay can also prevent damage to new growth from frost injury. Most of the **lily literature suggest planting good sized mature bulbs with the bulb base at a depth of 15 cm**, some even suggest 25 cm deep. Of course there are exceptions based on species. If your soil is light and sandy, deep is doubly important and if it is heavy then you want to plant a little closer to the surface. Mulching goes a long way in keeping the soil surface cool, consider using your grass clippings in a thin layer for a free and effective mulch, then you can work them into the soil at the end of the season.

Last word - **remember that lilies do not compete well with weeds, so keep up on your weeding!** You will also find you will have far, far less trouble with botrytis and other fungal problems when there are no weeds around your lilies. Good growing to you and your gardens this season!



## REMINDER FOR JUDGES

**Reminder to all Judges to send in your NALS judge activity report for 2012.**

Also to those judges who have not judged in a while (3 years) Please confirm with NALS Judges Accreditation you still have your accreditation, as you will typically lose it unless arrangements are made. We will need all our judges for 2015. Contact information:



Kathy Andersen  
2565 Charlestown Rd.  
Phoenixville, PA 19460  
(610) 933-1855  
ksa2006@verizon.net

## NALS 2015 - JULY 15-19, 2015 INTERNATIONAL LILY SHOW & CONFERENCE



Our NALS show committee is going to be busy over the next 2 years organizing the International Convention and Show hosted in Calgary. **Consider taking out a NALS membership to help support our parent society.**

I am excited to let you know, the Alberta Regional Lily Society (ARLS) will be hosting the 2015 International Lily Show and Conference in the city of Calgary, Alberta July 15th - 19th, 2015. **I, Adam Yakabuskie will be the Show Chair, and Lorne Kaban will be the Vice Show Chair.**

An international show is a great way to showcase our city, as well as our society. **We will be looking for volunteers to help make this show a great success.**

Volunteers are needed for a wide range of positions, so **please contact Lorne Kaban or Adam Yakabuskie** if you are interested in helping out.

**Adam Yakabuskie:** martagon@shaw.ca phone: 403-244-9073  
**Lorne Kaban:** dlkaban@hotmail.com phone: 780-812-3533

## Watch out for Color Break- Is this Virus Ruining Your Lilies?

### An Overview of Lily Mottle Virus

*By Breana Venneman, Olds College Lily Research Assistant, and Bill Mackay*

Have you ever noticed your lily flowers seem to **be** darkly streaked, or oddly mottled in color? Perhaps you have observed that the plants are becoming stunted and starting to wilt, or the leaves are becoming streaked with yellow, right in the middle of growing season? Such symptoms are not due to your lack of gardening prowess; these may be the symptoms of Lily Mottle Virus. Lily Mottle Virus (LMOV), also known as Lily Streak virus, is one of the most important known lily viruses **in lilies**. Although infection by LMOV may cause nearly unnoticeable or even uniquely beautiful effects in your lilies, it is ultimately a devastating virus and care should be taken to prevent transmission.



Figure 1. Lilies infected with Lily Mottle Virus. Notice the streaked appearance of the flowers. (Photo copyright Bill Mackay)

When symptoms caused by Lily Mottle Virus were first observed on lilies, it was originally thought to be the result of infection by Tulip Breaking Virus (TBV). TBV is one of the oldest recognized plant pathogens, first identified by Carolus Clausius in 1576. It is this virus that causes the beautiful color breaking pattern seen in Rembrandt tulips. In fact, it was this virus and the coveted color- broken tulips that resulted from

infection that were the cause of wild speculation and the near collapse of the Dutch economy in the mid 1600s, a period known as “Tulip Mania”.<sup>i</sup>



Figure 2. Rembrandt Tulip (Photo copyright [www.gardeningadvice.net/growing-tulips.html](http://www.gardeningadvice.net/growing-tulips.html))

Lily Mottle Virus is indeed closely related to Tulip Breaking Virus; they are both a part of the family *Potyviridae* and genus *Potyvirus*. However, it was not until the 1990’s that, upon further biochemical testing, it was discovered that these two viruses are in fact distinct strains. *Potyviruses* that induce color breaking interfere with the accumulation of anthocyanins, plant pigments that determine red, purple, or blue flower color. This results in a mottled flower. It is hypothesized that the color broken sectors of the flowers (the sections of the flower that appear to have lighter or darker than normal blotches of color) represent areas of the flower which have been affected, and normal sectors represent areas of virus-free cells.<sup>ii</sup>





Figure 3. The red lily is showing symptoms of infection by LMoV (Photo copyright Bill Mackay)

leaves. Leaf mottle or leaf mosaic, as well as curling, narrowing and yellow streaking of the leaves are all symptoms of Lily Mottle Virus. Of course, the most obvious display of infection by LMoV appears in the blooms; some cultivars may show color breaking or mottling, malformation, and asymmetry of the flowers.<sup>iii</sup>

Infected plants may be shorter than healthy plants, and may experience up to a 20% reduction in bulb yield.<sup>iv</sup> The most effective way to correctly identify whether your lilies have been infected by LMoV is to have it tested by lab technicians, who will use an enzyme-linked immunosorbent assay (ELISA) to

serologically identify the virus.<sup>v</sup>

The Lily mottle virus can only be transmitted by a vector, specifically, via aphids. Aphids feed on the sap of plants, and have piercing mouthparts that provide the perfect inoculation tool for transmitting viruses as the aphids go from plant to plant. This, besides physically grafting bulbs with infected stock, is the only method of virus transfer.<sup>vi</sup>

Unfortunately, infection by virus is incurable, but precautions can be taken to avoid infection. If you suspect your lilies to be infected by Lily Mottle Virus, immediately remove the lilies from the uninfected stock and destroy them. If you wish to have it properly tested, send the bulb in for ELISA testing, though this is an unnecessary measure for the average gardener. To prevent infection, keep your lilies looking healthy, as aphids may be attracted to the yellow-green color of unhealthy plants. Also be sure to maintain weed control around the lilies, as weeds can act as reservoirs for insects and pests. Do not plant Rembrandt or color- broken tulips near

Infection by Lily Mottle Virus may affect the health and appearance of your lily garden. It can also seriously restrict the production of saleable lilies, which can cause great economic loss to producers and exporters of these beautiful flowers. It is therefore imperative to maintain lily quality and watch out for signs of infection so that appropriate measures may be taken. The symptoms of infection by LMoV differ amongst cultivars, depending on their susceptibility and sensitivity. Plants may even be symptomless in early stages of growth and development. LMoV infection typically shows symptoms in the



Figure 4. Lily leaves showing symptoms of LMoV infection (Photo copyright Kathy Merrifield 1992)

## LILY VIRUS CONT'D

your lilies, as cross-infection is possible. Spraying mineral oils on the leaf surfaces of the plants is an effective and safe method for controlling the spread of the virus. Oils are safe, eco-friendly, and biodegradable with minimal effects on the natural enemies of aphids. The oil works by adhering to the epidermal cells of the leaf surface, which disrupts the close association of virus particles with the interior lining of the aphid stylets, thus impeding virus acquisition and inoculation. Mineral oils do not harm or affect the probing behaviour of the aphids.<sup>vii</sup> On the other hand, petroleum-based oils may also be used; they work by blocking the respiratory spiracles through which insects breathe, killing the aphid vectors.<sup>viii</sup> It is also effective to use combined sprays using synthetic pyrethroid, a common insecticide, with mineral oil, which reduces the amount of oil required. The oil or oil mixture should be sprayed on the plants weekly from May to July, and bi-weekly through August and September. It should be noted that mineral oils may disrupt the waxy leaf surface, rendering the lily more susceptible to fungal infection. This can be overcome by adding a suitable fungicide to the spray mixture.<sup>ix</sup>

Lily Mottle Virus is a serious plant pathogen that may reduce the value and lifespan of your lilies. However, with proper precautions and a watchful eye, you can prevent infection and keep your lilies healthy and beautiful.

<sup>i</sup> Tulip Breaking, Department of Plant Pathology; University of Nebraska. © 2008 J.E Partridge <http://nu-distance.unl.edu/homer/disease/hort/bulbs/TuBrkg.html> (accessed June 27, 2012)

<sup>ii</sup> Ghabrial, S, Lesnaw, J. Tulip Breaking: Past, Present, and Future, *Plant Disease*; 84 (10): 1057. <http://apsjournals.apsnet.org/doi/pdf/10.1094/PDIS.2000.84.10.1052> (accessed July 25, 2012)

<sup>iii</sup> Asjes C. Control of aphid-borne Lily Symptomless Virus and Lily Mottle Virus in *Lilium* in the Netherlands, *Virus Research* 2000; 71 (1): 23-32.

<sup>iv</sup> Gotoh T, Hong X. Ornamental Crop Pest Management, *Encyclopedia of Pest Management* 2007; 562-567.

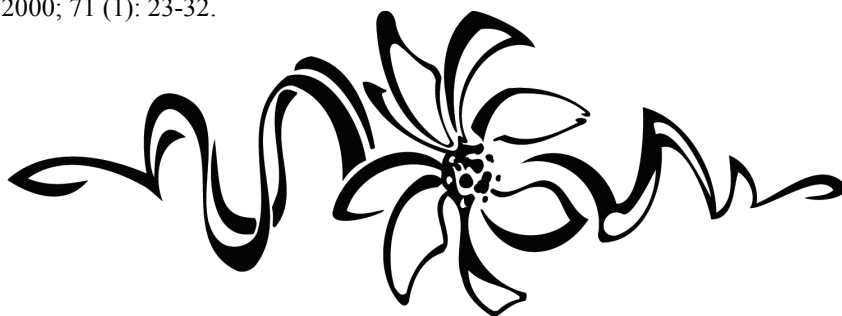
<sup>v</sup> Asjes C. Control of aphid-borne Lily Symptomless Virus and Lily Mottle Virus in *Lilium* in the Netherlands, *Virus Research* 2000; 71 (1): 23-32.

<sup>vi</sup> Kong B, et al. Production of Antiserum to Recombinant Coat protein for detecting Lily Mottle Virus, *Journal of Phytopathology* 2009; 157 (6): 362-369.

<sup>vii</sup> Asjes C. Control of aphid-borne Lily Symptomless Virus and Lily Mottle Virus in *Lilium* in the Netherlands, *Virus Research* 2000; 71 (1): 23-32.

<sup>viii</sup> Khajuria D, Gupta D. Oils, *Encyclopedia of Pest Management* 2007; 1-8

<sup>ix</sup> Asjes C. Control of aphid-borne Lily Symptomless Virus and Lily Mottle Virus in *Lilium* in the Netherlands, *Virus Research* 2000; 71 (1): 23-32.



# CASINO FUNDRAISER

**April 21 & 22, 2013 at the Argyle Casino.**

**As it is the day after the AGM contact leuan about staying on until Sunday if you live out of town. Work the Sunday for us! We need 40 volunteers to work this 2 day event. Shifts run approx. 10 AM - 7 PM - 2 AM depending on position. A great use of your time as each volunteer raises about \$2000 for the society! Few events will raise as much money as this per volunteer in this time period. Your meals are included. Please consider volunteering.**



**Call or email: [leuan@tbwifi.ca](mailto:leuan@tbwifi.ca) or 780 987 4398.**

**What costs does Casino fundraising dollars cover for ARLS and its members?**

**Education:**

seminars,  
workshops  
speakers as approved individually,  
resource materials  
library purchases  
brochures  
manuals  
information boards  
newsletter expenses  
website expenses

**Research:**

lily beetle  
lily growth trials  
judges fees  
special projects:  
Olds Fellner bed  
Olds Alberta lily bed  
Calgary Zoo heritage bed  
Devonian Botanic Garden beds  
Fellner farm heritage bed

11

**Advertising:**

shows  
events  
workshops & seminars  
general meetings

**Administration:**

storage unit rental  
insurances- directors, asset, liability  
office supplies

**Facility Rental:**

meeting room rentals  
show venue rentals

**Travel in province:**

bus rental in province for programs  
speaker travel as approved  
judges travel

**Equipment:**

purchase of software  
show stem holders, card holders etc.  
show table rental

**Prizes:**

trophies, plaques, ribbons only



# ARLS FLORAL DESIGN DEMONSTRATION



*submitted by Cecilia Bertram*

The highlight of the 2013 Alberta Regional Lily Society (ARLS) Winter Mingle held February 3rd was a Floral Arranging Demonstration by Irene Hill, a member of the St. Albert Floral Art Society. Irene has taken many classes in floral design and has instructed classes in basic and advanced floral design since 1988.

She demonstrated the waterfall design, satellite design and showed us how to use armatures in floral design.

Irene showed us how to gently partially open a closed lily bud and several mediums (stones, marbles, coloured foam) that can be used for stabilizers in design containers and emphasized that their colour must be in harmony with the colour of the lilies/flowers used in the arrangement. She used the floral material several

times to demonstrate different ways of doing each design. Other containers that can be used for the designs were displayed.

The designs were drawn for and the winners were: Susanna Durand, Marie Wenger, Laurie Hepper, Shauna Willoughby, Maureen Bexon X2 and Cecilia Bertram.

## WATERFALL DESIGN

The waterfall, sometimes called a cascade, design can be considered as both a classic and a contemporary design as it has characteristics of both. It is characterized by a downward or trailing flow of flowers and materials. The central part of the design is usually located at or towards the top of the design and the material is placed in several layers that appear to



come from an imaginary water source at the back of the design. The flowers and foliage flow from the centre of the design out and over the edges of the container trailing down the front of the design in a steep cascade. Alternately layering flowers and foliage creates texture and depth. In ARLS Designs, lilies must be dominant. Long pliable flowers such as carnations and clematis can be used as filler flowers. Foliage such as ferns, bear and lily grass, ivies, vines and conifers can be used to trail down the front to the bottom of the design to create the cascading effect.

Containers are usually tall and can be contemporary glass, pottery or metal but must not draw attention



away from the design. If the arrangement is displayed on a tall pedestal, a low container can be used, making certain that there is plenty of room for the design to cascade downward. Fragments of mirror, sparkly yarn or metallic thread can be added to give the appearance of reflected sunlight off the cascading water.

### **FREESTYLE IKEBANA DESIGN**

Nageire, Moribana, Rikka and Shoka styles of Ikebana all emphasize the natural beauty of flowers and plants.

NAGEIRE means "to throw into" in Japanese. An upright style container is used for these types of arrangements.

FREESTYLE NAGEIRE expresses the creativity and feelings of the designer. Although Freestyle does not follow traditional rules it is not just thrown together. Freestyle allows the designer more freedom in artistic choices in interpreting the theme, the expression of the designer and how the materials are used in any of the four basic shapes: vertical, horizon-

*Top Left: Floral Designer Irene Hill displaying various Armature types  
Bottom Left: Waterfall Design in an Armature*

*Top Right: Waterfall Design in the making  
Right: Finished Waterfall Design*

*All photos copyright Cecilia Bertram*





# ARLS FLORAL DESIGN DEMONSTRATION

## cont'd



tal, slanting or complex. Important elements in freestyle design are: line (from line material), surface texture (usually provided by leaves) and mass (volume of bunched floral material); points (small focal points other than the main focal point) may be added to the design.

The container is a part of the design and can be ceramic, glass, wood, metal, stone. There is freedom in the use of colour and choice of mechanics. Plant material, leaves, branches and flowers can be modified by pruning, bending or altering to a desired effect. In ARLS designs, the lily is the dominant flower and should not be changed. There is also freedom from the asymmetrical triangle and the rules regarding lines. Voids or open spaces are very important to the arrangement.

**These styles of design are two styles to be used in the 2013 ARLS Design Section of the Annual Show and we encourage all to enter their designs on July 20th. We all have the creativity and talent to do so, we just need to nurture it, practice it and display it. Check [www.arks-lilies.org](http://www.arks-lilies.org) for details.**



*Top Left: Floral Designer Irene Hill designing using Armature  
Bottom Left: Satellite Designs  
Bottom Right: Various containers*

*All photos copyright Cecilia Bertram*



# PREVIEW - ARLS FLORAL DESIGN 2013 SHOW SCHEDULE



## Section 3- Arrangements Design Rules

1. A fresh lily or lilies (genus *Lilium*) must be dominant in all designs. All plant material must be natural, whether fresh, dried or treated. Any type of accessory except artificial plant material is permitted.
2. Exhibits will be judged as follows:
  - Design.....30
  - Colour harmony.....20
  - Distinction.....20
  - Expression.....10
  - Conformance.....10
  - Condition.....10
  - Total of.....100%
3. Exhibitors may enter only one design per class.
4. Exhibitors must maintain their entry until the end of the show.
5. The space allotted for each design is 24" (61 cm) in width.

**Class 1** - Basket arrangement- Viewed from all sides or can be one-sided; handle must be visible.

**Class 2** - Lilies in a Vase. Only lilies. No other flowers or baby's breath, but may include foliage. Vase must be clear glass - not crystal - 8-9" (20-22.5 cm) tall and 4" (10.1 cm) in diameter. Vases available from the Show Committee or exhibitor may use own vase with above specifications.

**Class 3** - Bowl arrangement - A bowl is a container having a diameter at its mouth equal or greater than its height.

Decorative Theme Arrangements - "Let's Dance"

**Class 4** - Waltz - A contemporary waterfall design. Pedestal no higher than 24" can be provided if needed or you can use your own vase & pedestal if needed.

**Class 5** - Limbo - A modern horizontal design.

**Class 6** - Tango - A modern vertical line mass design.

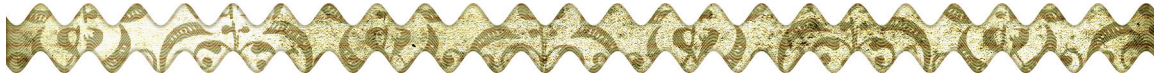
**Class 7** - Two-Step - A contemporary satellite design using two containers – the second smaller than the first and the two connected by the design.

**Class 8** - Minuet - A modern free style Nageire Ikebana design using an upright vase.

**Class 9** - Polka - A contemporary armature design using curves to encircle the design.

**Class 10** - Youth Design: Basket arrangement - All youth 18 and under encouraged to enter. Baskets with oasis for the design will be available Friday evening at the Show site, if you wish to get one.

# CLASSIFIED ADS



**Brian Bergman of Lily Crest Gardens** would love to have members contact him about the lily bulbs you may have purchased. He is an avid hybridizer and has supplied our bulb sales with many seedlings that he thinks may be cold climate adaptable. He would like to hear from you about the success and tribulations that the lily you bought is giving you. He has indicated that any report is good as it gives him more data as to whether to register the lily. If you have won ribbons with a seedling, he especially would like to talk to you. Contact at [bfberg@rogers.com](mailto:bfberg@rogers.com) or 1-416-614-6394

**WANTED:** Dawn Patrol bulbs - this is a yellow asiatic lily bred by Alex Burnett. I believe it was readily available at ARLS bulb sales in the late 1990's. I lost it to flooding unfortunately. If you have any to spare I would love to buy one or more if you have. Contact Lynnette Westfall webmaster@plantlilies.com or phone 780-877-2547.



**Olds College Botanic Gardens Committee** has several projects ongoing and would like to have more input from members. If you are interested in lily culture, would like learn more or provide input with the lily growth trials please call Bill Mackay 403 227 3563.

**WANTED:** Looking for a source, for *Katja*, *Byam's Ruby*, *Dieppe* (developed by Frank Skinner many, many years ago and supposedly still grown in some gardens), *Radiant Pink* (Ed Robinson) and *Barber #17*. If you can help me in any way with these, I would really appreciate it. Contact Lori Drebnisky, Comp. 33, R.R. 1, Dauphin, Manitoba R7N 2T4. Telephone 204-638-9986.

## VOLUNTEERS NEEDED

**Bulb Sale Committee Chair Needed Desperately!** Our Society needs to have a Chair and many sales leaders in the committee to run the Bulb Sales for 2013. Many thanks to Cathy Semeniuk, Britta Johnson, Laurie Hepper and Bryan Bennett for becoming 2012 Fall sales leaders and Lorne Kaban, Adam Yakabuskie & Laurie Hepper for being 2012 Spring sales leaders. Contact [pres@arls-lilies.org](mailto:pres@arls-lilies.org) for information if you have any interest.

# Style & Stigma

by L. wilmottiae aka Wilma

I just got back to Mysteria Lane from my short vacation and sat reading "Gray's New Manual -Botany", when the door knocker almost came through the door. I was reading about our distant cousins, "Asparagus", "Muscari", and "Hemerocallis" as they had expressed an interest in attending the next Liliaceae Reunion being planned for 2014. The Reunion Committee was having difficulty in choosing the limitations for those to attend this grand affair. Did we want a few or several of our rogue cousins to be there promoting their species and being intrusive? After all, the Lilium clan were in charge and were for the most part planning and hosting the entire event.

I opened the door before a hole was punctured and a Pistil might burst through. There stood dainty little L. pumilum her Filaments fluttering so hard it flooded the entryway with a gust of wind. Her Anthers were shedding Pollen and her Pedicels were almost drooping to the veranda. She was a mess, and with her was "Stella", looking bright eyed, cocky and wishful. They had been in an argument about the Reunion and neither was even on the Committee. I invited both to sit on the veranda as I did not want them continuing the brutal discussion indoors, and went inside to brew some Basil tea. After offering the tea to them I learned what the argument was about and thought WOW the Tribes were at war and the reputation of the Liliaceae family was at stake. Stella wanted "Alilium" from Tribe V to give the Opening Speech, and a representative of Hemerocallis from Tribe VI to give the Closing Speech, and whatever Ms. L. pumilum wished to incorporate in between would be fine with her. Was this crisis even up to these two I wondered? Why the sudden rush of interest of these two? Family

feuding was the answer I guessed.

Both sets of ears listened as Stella breathlessly gave her reasons to be granted her wish as after all we needed to hear from all sides, and the presentations from all Tribes, and in particular we needed to hear from the Polygonatum group from Tribe X and the other many distant relatives. She ended her rant and sat wilted on a step. L. merely suggested the entire matter be put on the Agenda for the upcoming Committee meeting to which I agreed, and she rested her case easily.

It was decided then to have the President of the Reunion Committee, L. philadelphicum, see that this quandary be settled by way of Parliamentary procedure and vote just to be sure of a fair outcome and to end the warring between these family members. L. pumilum and I felt that L. superbum, L. canadense and L. grayi along with L. Philadelphicum would fairly mull over, discuss and evaluate both sides of the argument to make sure the Reunion (only a few years away) would accommodate all family members, the associated species, and some invited guests outside of the family to ensure a good time was had by all.

It was even suggested that Dog's Tooth Violet, False Solomon's Seal, Lily of the Valley, Grape Hyacinth and the like be invited guests just to keep peace on Mysteria Lane. The upcoming meeting should be interesting.





# Events

\*\*\*Please check the web site for  
last minute updates & changes

## MARTAGON SHOW

July 6 & 7, 2013

Devonian Botanic Gardens  
Devon, AB

## ANNUAL SHOW

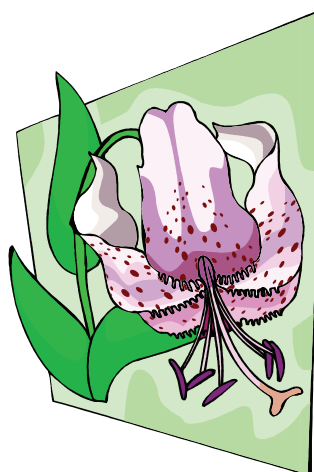
July 20 & 21, 2013

Central Lions Club  
Edmonton, AB

## SEMI-ANNUAL GENERAL MEETING

October 19, 2013

Calgary, AB Location TBA



*If you have Events  
or other news to  
be included in our  
newsletter please  
contact news@  
arls-lilies.org*

## MARTAGON SHOW

July 5 & 6, 2014

Devonian Botanic Gardens  
Devon, AB

## ANNUAL SHOW

July 19 & 20, 2014

Central Lions Club  
Edmonton, AB

NALS Convention - July 2015

## ARLS ANNUAL GENERAL MEETING

April 20, 2013

Woodvale Community Facility, 4540 - 50 Street Edmonton, AB

Meeting 10:00 AM      Seminar after lunch

non-members - \$5.00 to attend seminar, members - no charge

Seminar Speaker: TBA

### ADDRESS:

Alberta Regional Lily Society  
c/o Britta Johnson, Treasurer  
PO Box 87523 Edmonton, Alberta  
T6E 0R6

March 2013

Copyright © 2013 Alberta Regional Lily Society  
All rights reserved.

## ARLS Affiliates

Alberta Horticultural Association  
[icangarden.com/clubs/aha](http://icangarden.com/clubs/aha)  
Calgary Horticultural Society  
[calhort.org](http://calhort.org)  
Edmonton Horticultural Society  
[edmontonhort.com](http://edmontonhort.com)  
North American Lily Society  
[lilies.org](http://lilies.org)