

ALBERTA REGIONAL LILY SOCIETY

Show off Your Favourite Lilies!
June 1 until October 19, 2013

PHOTO

Contest 2013



Viewers
Choice
WINS

**CHECK INSIDE FOR
FULL CONTEST DETAILS**

**2 Ways To Submit Photos!
Submit Photos in 2 Categories**

Prize sponsored by  **Plantlilies.com**

Please read the Contest Rules for a contest description,
prize information and to find out how to enter



ALBERTA REGIONAL
LILY SOCIETY
NEWSLETTER

The Bulblet

VOLUME 28, NUMBER 2

SUMMER 2013

Board of Directors



PRESIDENT

Laurie Hepper (to 2015)
9739 146 ST, Edmonton AB T5J 2Z3
Phone 780.455.0434
pres@arls-lilies.org

Ieuan Evans (to 2014)

127 27019 TWP RD 514, Spruce Grove AB
T7Y 1G5
Phone 780.987.4398
ieuan@tbwifi.ca

VICE PRESIDENT

Bill Mackay (to 2015)
Box 6262 Innisfail, AB T4G 1S9
Phone 403.227.3563
vice@arls-lilies.org

Arnold Semeniuk (to 2014)

12, 27005 TWP RD 511, Spruce Grove AB
T7Y 1G8
Phone 780.987.4763

PAST PRESIDENT

Vacant

Suzanne Stach (to 2014)

P.O. Box 56, Gibbons AB
T0A 1N0
Phone 780.710.0775
sueingabs@gmail.com

SECRETARY

Lorne Kaban (to 2015)
Box 7492, Bonnyville AB
T9N 2H8
Phone 780.812.3533
sec@arls-lilies.org

Kathy Strawson (to 2015)

14312 106B Ave, Edmonton AB T5N 1E9
Phone 780.452.9741
kstrawson@gmail.com

TREASURER & MEMBERSHIP

Britta Johnson (to 2015)
9115 67 Ave NW, Edmonton AB T6E 0N3
Phone 780. 433.7869
treasurer@arls-lilies.org

Adam Yakabuskie (to 2015)

235 Prestwick Mews SW, Calgary AB T2Z 3X7
Phone 403.244.9073
martagon@shaw.ca

DIRECTORS

Cecilia Bertram (to 2014)
9716 67A St Edmonton AB T6B 1S2
Phone 780.469.1085
bertramc@telus.net

LIBRARIAN

Terry Willoughby (Board Appointed-to 2014)
3, 54029 RR 275 Spruce Grove AB T7X 3S6
Phone 780.968.1818
library@arls-lilies.org

Bryan Bennett (to 2015)

5223 40 St Close, Innisfail AB T4G 1G5
Phone 403.227.5178
legman@telusplanet.net

WEB EDITOR

Shauna Willoughby (Board Appointed-to 2014)
3, 54029 RR 275 Spruce Grove AB T7X 3S6
Phone 780.968.1818
webeditor@arls-lilies.org

Mike Danchak (to 2014)

8823 - 41 Avenue, Edmonton AB T6K 1G6
Phone 780.462.0615
mikedanchak@yahoo.ca

NEWSLETTER EDITOR

Lynnette Westfall (Board Appointed-to 2014)
RR 1, Edberg AB T0B 1J0
Phone 780.877.2547 Fax 780.877.2540
tech@arls-lilies.org or news@arls-lilies.org

*Volunteers are
always needed
to help with or
manage various
projects - call a
director today if
you can help in any
way!*

Future BOD Meeting Dates:

2013 Aug 11, Nov 24

- * Aug 11 - 11 AM garden tour, potluck 1- 4 pm
- * Nov 24 - teleconference

General Meeting Dates:

Semi Annual General Meeting Oct. 19, 2013



Editor's Notes

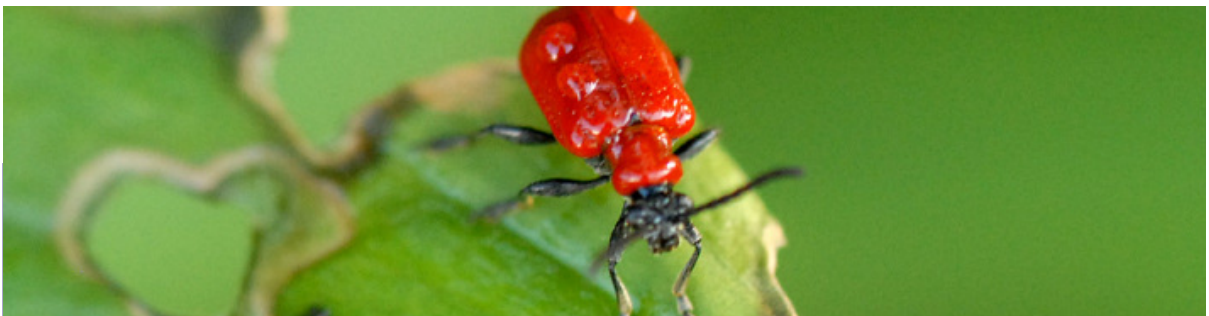
Greetings to our members, from the looks of the latest membership list, **we have many new members** since the last issue! Welcome to all, please remember we value your feedback and input on everything to do with our organization so don't be shy, let us know what you think good or bad - improvement can only come with the knowledge that a problem exists!

I'm sure all our members will be thrilled to **see photos of four lily varieties now growing at Olds College**, which have been chosen for propagation & registration - you will find those **on page 11**. I love the series name chosen for them, what do you think?

Speaking of photos, I know you couldn't help but notice ARLS is hosting its first Photo Contest this year! Remember to check your digital camera settings before you start taking pics if your using a digital camera - be sure you are snapping them using the **highest and finest resolution the camera is capable of** and you'll be able to print nice, crisp, large prints which you can enter. I'd love to see one entry from every member!

Here's hoping we all see our fair share of sun & rain this summer, until next time...

Lynnette Westfall



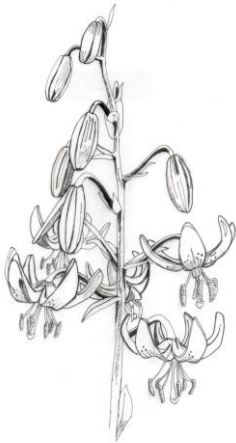
ARLS, other garden focused clubs as well as commercial lily growers across Canada & the USA were contacted recently with the following news:

I am writing to call your attention to my new website, Lily Leaf Beetle Tracker. The primary goal of this site is to map the North American distribution of the lily leaf beetle. The site has a Google map that we hope to populate with input from lily growers everywhere (there's a form for uploading both the location of beetle sightings and photos). In addition, the site will provide news about our biological control effort based in Ottawa, as well as occasional musings on biological control in general. Best wishes and thank you,

Naomi Cappuccino
Department of Biology
Carleton University
Ottawa, Ontario

<http://lilybeetletracker.weebly.com/>

President's Message



From the desk of the President to the membership June 2013

Elections have come and gone and the Officers remain the same. We have a new Director Susanna Stach welcome. Our other Directors are re-elected for another term. Thank you to Kevin for handling the election.

I dropped off the Annual show schedule and events brochure to my neighbour who has a young daughter interested in flowers. Let's hope she is interested in the NEW design section for youth.

Our first two bulb sales are over with Calgary giving us \$800 plus after expenses selling 40 varieties of lilies. I guess the gardeners want a wide selection. They sold all 400 bulbs. Bonnyville sale had 120 bulbs plus all the bulbs remaining from the Calgary fall sale about 230. Surprisingly most of the sales were from the old stock, but the Bonnyville gardeners had not seen any

of these in that area before. The stock was in very good shape after storage and I thank Arnold for letting ARLS store a stack of lilies in his root cellar. Note to everyone; The old fashioned way seems to beat the regulated refrigeration we tried before.

The weather this year is confused and undecided about spring we had a warm spell in February I think we had spring last week I saw my first butterfly and killed my first mosquito had my first fire pit and outdoor dinner on the 26th of April then Sunday, Monday, Tuesday we had snow. I hope all my lady bugs in my front lawn survived. We raked all the leaves off Sunday and I did try to catch the ones I saw and put them into the garden to burrow. My task for Monday was to clean out the garden, obviously postponed until spring comes again. At least my grass is turning green.

It is April and I have OT's and asiatics popping their noses and necks up LF-1 is already pushing eight inches. Silly lily doesn't it know it is not spring yet.

I get to make another garden this year, and transplant everything- some of it, well definitely the lilies, from one of my other ones. My husband is going to plant a truck and camper on it so my fun will come as soon as it is spring, again, to cut away part of my front lawn and get those plants moved; now where to put the cedar hedge, and I needed to divide that iris anyway.

It is just before deadline and LF-1 is a few inches shy of 2 ft, I have martagons at all heights from over a foot to just emerging. My daffodils and narcissus are blooming and I have *tulipa tarda* and prairie crocus giving me spring colour.

I would like to give a **BIG Thank You** to all the volunteers who came out to work the casino. We had twelve people work a double shift and Lorne and Iuan did it back to back. Every nine hour shift worked earns the society about \$2000 of AGLC funds and helps to fund our education and research initiatives. Our efforts to earn these funds is a best return on volunteer time at about \$200 per hour. I always feel I have accomplished something very good by giving this time and I learn something every time I work a casino. I also get to talk to other members in slow periods, which as we are all across Alberta, is a great way to get us together. We have many projects being planned with this money and hope you are able to come out for the next casino to help us continue to fund existing and new projects to promote the genus *lilium*.

A heartfelt **Thank You to all our Volunteers**. April 21- 27 was **National Volunteer Week** and I appreciate every minute you give to our Society.

ARLS is going to be refurbishing the Devonian Botanic Gardens Asiatic beds so keep in mind we will need to have a bulb digging party in the fall to pot up whatever is surviving while the beds are being redone.

Hopefully your lily seeds are sprouting indoors, the cats are not digging up your bulbs and the deer and rabbits stay away from your shoots. Please put your request in for a warm rain instead of snow. Just a note any lily you planted last year should be ready for the 2015 NALS show.

And remember report a sighting lilybeetle@arls-lilies.org it is in your ALBERTA. It is in Edmonton, Olds, Calgary and other places. Inspect your lilies regularly, now is the time the beetle comes out of hiding.

Check out the new website from Carlton University <http://lilybeetletracker.weebly.com/>.

We are going to promote this site too. Hopefully it will get populated with sightings- much as I hate to have the map full of dots, it will let people know how bad the pest is.

Best Regards and good growing, Laurie



MEMBERS - NEED TO KNOW INFO



2013 BULB SALES

WESTMOUNT FARMERS MARKET

Sept. 26, 10 AM - 5 PM
111 Ave & Groat Road, Edmonton

MUTTART CONSERVATORY

City of Edmonton - FREE Admission!
Sept. 29, 10 AM - 5 PM
Question & Info table 10 AM - 6 PM
9626 96A Street NW Edmonton

EDMONTON HORTICULTURAL SOCIETY (EHS)

EHS members FREE Non EHS members \$5
Sept. 30, 6:30 PM - 8:30 PM
Central Lions Centre
11113 - 113 Street Edmonton

CALGARY
DATE, LOCATION & TIME
To Be Determined

*Don't forget....
bring your membership card
to get your
member discount!*

ST. ALBERT BOTANIC GARDENS

holds educational seminars. This year they are working on presenting a lily seminar. If it goes well they may invite ARLS back to present more Liliaceae information. **Contact the garden for more information on their educational series.**

MEMBER BENEFITS

Members receive discounts at the following businesses:

* ALL SEASONS GARDEN CENTRE. 10027-81 AVE. EDMONTON 10% discount. Membership card must be presented and discount may not apply to all products.

* APACHE SEEDS LTD. 10136 149 ST., EDMONTON 10% discount. Membership card must be presented and discount may not apply to all products.

* CANNOR NURSERIES LTD. TWP RD 514 WOODBEND RD, SPRUCE GROVE (west of Devonian Gardens) 10% discount. Membership card must be presented and discount may not apply to all products.

* ELLERSLIE GIFT & GARDEN 10330 Ellerslie Rd SW, Edmonton Membership card must be presented prior to purchase and discount may not apply to all products.

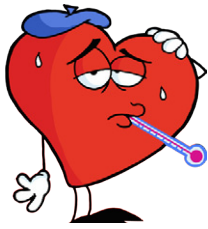
* VALLEY K LILY RANCH AKA plantlilies.com 15% discount on all bulb orders, excluding shipping. **Be sure to state you are an ARLS member and wish to receive the discount,** membership is verified with ARLS due to difficulty in showing member card via internet, phone, etc.

ARLS Seminars

Seminars and workshops are planned for each spring and fall, typically they start immediately after the general meeting. Members attend seminars free of charge, guests and non-members must pay \$5.00 each. Check the web site for most accurate information.

ARLS Bulb Sales

Members receive a 10% discount on purchases as well as the opportunity to volunteer helping with sales and preparation, which entitles you to reserve bulbs in advance of the sales.



Founding member **Fred Tarlton** is at unit 1805 in the Sturgeon County hospital in **St Albert**. He can receive visitors if anyone wants to stop by for a chat. After the hospitalization he will be moving to a nursing care facility. Get better soon Fred!



Photos this page
copyright
Laurie Hepper

On the left is Fred with one of his glorious trumpet hybrids. Above a close-up of the bloom.



Next newsletter due out in **SEPTEMBER**

Submissions deadline **August 15.**

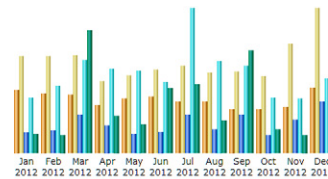
Your contributions be they small or large are most welcome!

ARLS WEB SITE STATISTICS

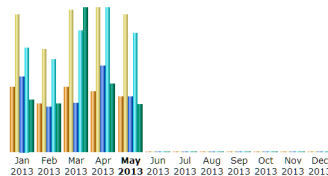
by Lynnette Westfall

Although many members who visited the web site thought it was down last fall and into the new year, the detailed statistics show a different story. On the right you see an overview of the years visitor stats.

The issue was with the outdated system used to design the original site, which was incompatible with a major server security upgrade carried out the last week of August. The biggest problem came down to a combination of browser cache problems, site cache instructions to browsers and security settings set by the system which manages most pages of the site. Those settings were rendered incompatible after the server upgrades. Disabling one of the security files allowed it to be visible to most who had problems previously. For the most part, it was only visitors who had browsed previously who had the issue. ARLS Photo Gallery pages were all readily accessible to all visitors without issue, as it was built with a different system than the main site.



Month	Unique visitors	Number of visits	Pages	Hits	Bandwidth
Jan 2012	800	1,230	3,710	10,073	180.89 MB
Feb 2012	763	1,225	4,063	12,285	175.30 MB
Mar 2012	740	1,241	6,941	17,089	1.17 GB
Apr 2012	602	912	5,141	15,370	366.60 MB
May 2012	687	989	3,542	15,061	278.91 MB
Jun 2012	719	1,053	3,891	13,034	631.06 MB
Jul 2012	647	1,108	7,019	26,576	671.30 MB
Aug 2012	651	1,019	4,421	16,844	317.94 MB
Sep 2012	552	1,031	6,961	16,045	1000.34 MB
Oct 2012	551	976	3,347	10,040	234.25 MB
Nov 2012	585	1,382	6,186	9,994	179.91 MB
Dec 2012	833	1,836	9,307	13,591	1.38 GB
Total	8,130	14,002	64,529	176,002	6.49 GB



Month	Unique visitors	Number of visits	Pages	Hits	Bandwidth
Jan 2013	667	1,400	8,892	12,308	218.23 MB
Feb 2013	492	1,049	5,296	10,922	203.84 MB
Mar 2013	666	1,448	5,833	14,284	602.91 MB
Apr 2013	617	1,468	10,093	16,949	285.40 MB
May 2013	563	1,398	6,557	14,017	198.65 MB
Jun 2013	0	0	0	0	0
Jul 2013	0	0	0	0	0
Aug 2013	0	0	0	0	0
Sep 2013	0	0	0	0	0
Oct 2013	0	0	0	0	0
Nov 2013	0	0	0	0	0
Dec 2013	0	0	0	0	0
Total	3,005	6,763	36,671	68,480	1.47 GB

The North American Lily Society, Inc.

presents

66th Annual Lily Show and Symposium
West Des Moines, IA June 26- 30, 2013

Celebrating Lilies In The Heartland



hosted by
The Iowa Regional Lily Society
Celebrating 40 years Growing Lilies

at
The Sheraton West Des Moines
1800 50th Street
West Des Moines, Iowa USA

visit <http://www.iowaregionallilysociety.com/NALS2013home.html>

NALS 2015 - JULY 15-19, 2015 INTERNATIONAL LILY SHOW & CONFERENCE



Our NALS show committee is going to be busy over the next 2 years organizing the International Convention and Show hosted in Calgary. **Consider taking out a NALS membership to help support our parent society.**

Many members already know the Alberta Regional Lily Society (ARLS) will be hosting the 2015 International Lily Show and Conference in the city of Calgary, Alberta July 15th - 19th, 2015. An international show is a great way to showcase our city, as well as our society. **We will be looking for volunteers to help make this show a great success.**

Volunteers are needed for a wide range of positions, **please contact Lorne Kaban or Adam Yakabuskie** if you are interested in helping out.

Adam Yakabuskie: martagon@shaw.ca phone: 403-244-9073
Lorne Kaban: dlkaban@hotmail.com phone: 780-812-3533

REPORT ON ARLS WEB SITE

By Bill Mackay

Many of you will know that in December the ARLS website disappeared. That was a sign that something needed to be done and it needed to be done soon. So finally, after years of agonizing and investigating various alternatives the ARLS website is going to be upgraded over the next few months. The main feature of the present upgrade will be putting out content on a new content management system (cms), in this case WordPress which is used by 17% of the World's websites. The cms of our current website is Textpattern. The advantage of WordPress, so far as I can tell, is that it is more user friendly than Textpattern so that show chairs for example will be able to post their own content without having to go through a webmaster.

The first step in will be to put our current website content on Wordpress. We won't be moving the photo section but there will be a seamless link to it. Once we have moved our existing content to Wordpress we will add various 'plugins' that will allow us to become more user friendly with regard to accepting membership renewal on line, paying for semi-annual lunches, etc. on line. Our biggest goal is to move more firmly into the social media world which will include a link to an ARLS Facebook page, places for people to post their lily photos, in addition to a separate 'official ARLS' gallery of lily photos, etc. There will be a separate Facebook page for the 2015 NALS meeting.

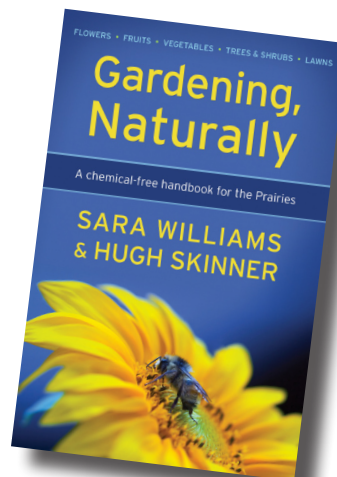
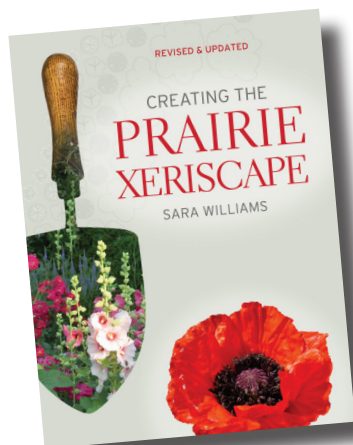
Estimated cost of the initial upgrade is \$1,850.00. With a little luck the upgrade will be done in time for the annual show.



A NOTE FROM SARA WILLIAMS.....

This letter was received in February but unfortunately, our March newsletter had no space available to reprint it.

*Book covers copyright
Coteau Books*



Dear Gardening Friend

My own Valentine's gift was the delivery of the newly revised, expanded and updated "Creating The Prairie Xeriscape".

Published by Coteau Books in Regina and printed in Manitoba, the design and quality of photographs and paper is outstanding. Over two years in the making, it's simply beautiful!

In full colour throughout, the design section has been greatly expanded and there are now more than 200 genera, 300 species and 900 varieties of drought-tolerant, hardy plants to choose from when creating your own xeriscape.

"Creating the Prairie Xeriscape" is available from fine bookstores across Canada or directly from Coteau Books.

The good news? If you order it directly from Coteau on line, they pay the shipping within Canada!

<http://coteaubooks.com/index.php?p=Shop&redirect=product-info.php?pid258.html>.

Organizations such as horticultural societies and garden clubs wishing to purchase 10 or more copies of "Creating the Prairie Xeriscape" will receive a 40% discount when they order from Coteau Books. To place your order call Holly at 1-800-440-4471 or email holly@coteaubooks.com <<mailto:holly@coteaubooks.com>>.

I hope you will enjoy giving it to gardening cohorts, reading it and incorporating xeriscape ideas into your own landscape as much as I enjoyed writing it.

With all best wishes for an early spring!

Sara Williams

P.S. And to reduce the chemical intake of your landscape and household, consider "Gardening Naturally: A Chemical-free Handbook for the Prairies", with co-author Hugh Skinner, also published by Coteau Books.

REPORT ON OLDS COLLEGE PROJECT

submitted by Bill Mackay

ARLS supports a number of lily related activities at Olds College. There are two show beds in the main public quadrangle of the College. We have the original bed which features Alberta bred lilies and we are developing another bed that features Alberta bred martagons. In addition we have the Fred Feller bed which is in a very prominent position just south of the Land Science Building. This public space is open to the public year round and is really worth a day visit in the summer. There are mass plantings of lilies in other beds, particularly near the rose garden, etc. These are not part of ARLS activity at Olds College.

In addition we are currently gathering performance data on lilies in the research area of the college which is not open to the public (see Appendix A). We have been gathering data for a number of years. Last summer we did a preliminary analysis of the data from the first three years of our trials testing the effects of planting depth and mulch depth on performance. Links to these reports are below. The last link is a short description of the trials with nice photos.

Link to Olds College Lily Data file -

<https://www.dropbox.com/sh/h56t0duznvy1kg/S4irTmRCbh>

Final Data and graphs (2009, 2010, 2011) -

https://www.dropbox.com/s/e2qi6wte4oy86n1/Lily_Trials_Data_2009-2011_Final%5B1%5D.pdf

Description of Olds College Lily Trials -

https://www.dropbox.com/sh/h56t0duznvy1kg/glOMK1o8pp/The_Olds_College_Lily_Trials%5B1%5D.pdf

2013 is the Centennial of Olds College. The college has selected four new cultivars donated by ARLS members as the part of a 'college' series of Asiatic lilies (See appendix B). They are: College Triumph, donated by Bill Jopling; College Tradition, donated by Ieuan Evans; College Sunrise, donated by Terry Willoughby; and College Pride, donated by Terry Willoughby. The latter two are Fred Fellner Seedlings.

As a result of our ongoing evaluation of lily performance we have developed a template that any hobbyist can use to record performance of lilies in their own garden

Each year I work with the summer student to prepare articles based on our work at Olds College that we hope will be of interest to hobbyists.

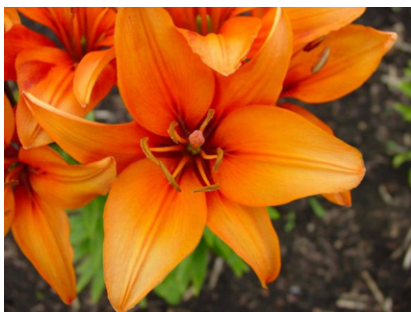
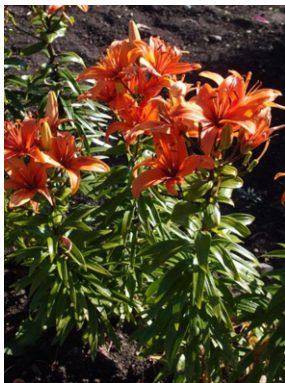


*Photos supplied by
Bill Mackay*



College Sunrise – Fred Fellner Seedling – Terry Willoughby

College Pride – Fred Fellner Seedling – Terry Willoughby



College Triumph – Bill Jopling Seedling

College Tradition – Ieuan Evans Seedling

Olds College Centennial Lilies

For three years the college has trialed the 13 lilies that were submitted by ARLS hybridizers as candidates for lilies that the college would feature and market during its centennial in 2013. This is a great opportunity to raise the profile of lilies among the thousands of alumni and supporters of the college. In all of the marketing the Olds College – ARLS partnership will be highlighted.

Data required for registration of all 13 lilies was obtained by Breana during the summer of 2013. So those lilies that were not selected for registration can easily be registered by the hybridizers. Four lilies have been selected for registration and marketing this year and four others are being considered for registration next year (see table below). After consultation with Duncan Donald of the RHS it was decided to go with a series which would be called the 'College' series. The registrations have not been approved but the names chosen have not been taken and Duncan thought that all four first choice names would be acceptable. By the time people read this report the registrations will have been submitted to RHS.

Seedlings selected for registration by Olds College as part of the College's centennial in 2013			
Contributors Designation	Registered name	Flowering period	Number of Flowers
BJ96-G	College Triumph	Aug 3 – 31	6
IE Yellow brush	College Tradition	July 16 - Aug 14	3
TW Fellner select red	College Pride	July 27 - Aug 12	7
TW FF 07-06(2)	College Sunrise	Aug 3 - 31	5
BJ 20-21	May register next year		
IE side outfacing pink	May register next year		
TW FF 07-02	May register next year		
TW Pink tiger stripe	May register next year		

Three of the lilies registered this year ('Triumph', 'Tradition', and 'Pride' were tissue cultured with the expectation of obtaining 1,000 bulbs of each cultivar. 'Sunrise' is fairly prolific so it was not tissue cultured. Some of the lilies being considered for registration have been slow to mature but have flowers of exceptional quality.

Details of how the lilies will be marketed have not been totally worked out. They will be sold for sure by the college and advertised in their centennial 'swag' literature. They may also be sold through Alberta lily marketers who are interested.

continued on page 14

ARLS THANKS VOLUNTEERS



My thanks to the casino volunteers. The ARLS Casino on April 21 and 22, 2013 held at the Argyll Casino, Edmon-
ton proceeded smoothly and effectively. Many thanks to
many of our members who did shifts on both Sunday and
Monday. The same "gang" of seven did both the 9:30 to
3:00 a.m. shifts. Sincere thanks to them. All told, 26 of our
ARLS members worked this two day casino. I do not mind
organizing casinos but fate generally gives me two separate
casinos only days apart to organize which can be somewhat
confusing.

This time it was the Friends of the Devonian Botanic
Garden Casino. By the way our oldest volunteer was only 87 years of age.

Sincerely
Ieuan R. Evans
ARLS Casino Coordinator

Thanks to Britta for supplying the fol- lowing list of Casino volunteers:

Kathy Strawson
Britta Johnson - 2 shifts
Emmett Wenger
Marie Wenger
Byron Waterhouse
John Beedle (an inspiration to every-
one)
Ieuan Evans - 2 shifts
Laurie Hepper - 2 shifts
Lorne Kaban - 2 shifts
Chris Lacroix
Leo Krupka - 2 shifts
Wilf Maul
Sharon Bury - 2 shifts
Lil McLean - 2 shifts
Bertha Lardner - 2 shifts
Bob Yaremko - 2 shifts
Kevin Frey - 2 shifts
Maureen Bexon - 2 shifts
Mike Danchuk - 2 shifts
Terry Willoughby
Shauna Willoughby
Judy Rybaczk
Bill McKay
Arnold Semeniuk
Cathy Semeniuk
Bill Jopling



There are also a couple of other fund-
raising events that occurred during
the last months and relied on volun-
teers:

Bonnyville Garden Day

Lorne Kaban single-handed sold 9
NEW memberships and over \$1400
worth of bulbs!

EHS Meeting

Bulbs were sold by:

Doreen Wyman
Kathy Strawson (who also sold bulbs at the U of A)
Judy Rybaczk
Britta Johnson

Calgary Garden Show

8 memberships/renewals sold
over \$2000 worth of bulbs

**THANK YOU TO ALL WHO HAVE
HELPED WITH THESE & OTHER
EVENTS, WE COULD NOT DO IT WITH-
OUT YOU!**

Instructions for Lily Performance Data Sheet

The attached data sheet is intended for the use of any lily gardener who wishes to measure and record the growth and blooming characteristics of their lilies. These data are what is recorded in the lily trials sponsored by the Alberta Regional Lily Society at Olds College. It would be useful to obtain comparable data from different locations to compare the performance of cultivars under different conditions.

The following page contains tables for recording data. The scientific convention is to record size in metric (centimeters in this case). The data sheet provides enough space for recording data from three stems of a single cultivar. If possible, try choosing the three lilies stems that you will measure at random, but make sure they are the largest in the clump if you are recording data from a clump with more than three stems. Make sure that all three stems are of the same cultivar. If you would like to measure more than three lilies, additional data sheets with more space may be requested. And of course, multiple sheets may be printed off so you can measure multiple cultivars.

The first table highlights the growing conditions of the lilies you are measuring. The next table asks you to record the emergence date (the date when you first see the lily stem coming through the soil) and total number of stems in the clump for each lily cultivar that you have chosen to measure.

When using the tables intended for recording plant height, width, and bloom data measure the lilies once they are in bloom, as they have usually reached their peak height by this time. Measure lilies with a meter stick or measuring tape. When measuring height, start at the base of the plant (set meter stick gently on top of soil) and measure to the tip of the plant. When measuring width, measure horizontally from tip to tip at the widest point of the plant. Think to yourself: how much space is this lily taking up? Record measurements in centimetres.

For bloom data, begin recording when the first bud opens. When recording number of buds, write the number followed by a B. When recording number of flowers, write the number followed by an F. For example, if a plant has 3 buds and 2 flowers, you would enter 3B, 2F.

In the notes section of each chart, enter any irregularities that you notice in each plant (i.e. disease, destruction by pest, stunted growth, odd coloring, etc.).

Date Form for Evaluating Lily Performance

<u>Cultivar:</u>
Planting Location:
Sun Exposure (sun/ shade /partial shade):
Planting Depth:
Mulch (presence/ absence, depth):

Plant/ stem #	1	2	3
Date of Emergence			
Number of Stems at Emergence			

How long has it been since the bulbs were planted and/or split?

Plant Height (cm at maturity)

Plant #	1	2	3
Date			
Height			
Notes:			

Plant Width (cm at maturity)

Plant #	1	2	3
Date			
Height			
Notes:			

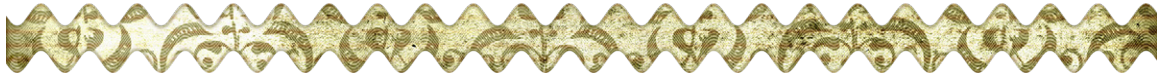
Bloom Data (# bud/flowers from first flower opening, recorded every couple of days)

Plant #	1	2	3
Date	Number of flowers/buds		

Plant #	1	2	3
Date	Number of flowers/buds		

Notes on Blooms:

CLASSIFIED ADS



Brian Bergman of Lily Crest Gardens would love to have members contact him about the lily bulbs you may have purchased. He is an avid hybridizer and has supplied our bulb sales with many seedlings that he thinks may be cold climate adaptable. He would like to hear from you about the success and tribulations that the lily you bought is giving you. He has indicated that any report is good as it gives him more data as to whether to register the lily. If you have won ribbons with a seedling, he especially would like to talk to you. Contact at bfberg@rogers.com or 1-416-614-6394

WANTED: Dawn Patrol bulbs - this is a yellow asiatic lily bred by Alex Burnett. I believe it was readily available at ARLS bulb sales in the late 1990's. I lost it to flooding unfortunately. If you have any to spare I would love to buy one or more if you have. Contact Lynnette Westfall webmaster@plantlilies.com or phone 780-877-2547.



Olds College Botanic Gardens Committee has several projects ongoing and would like to have more input from members. If you are interested in lily culture, would like learn more or provide input with the lily growth trials please call Bill Mackay 403 227 3563.

WANTED: Looking for a source, for *Katja*, *Byam's Ruby*, *Dieppe* (developed by Frank Skinner many, many years ago and supposedly still grown in some gardens), *Radiant Pink* (Ed Robinson) and *Barber #17*. If you can help me in any way with these, I would really appreciate it. Contact Lori Drebnisky, Comp. 33, R.R. 1, Dauphin, Manitoba R7N 2T4. Telephone 204-638-9986.

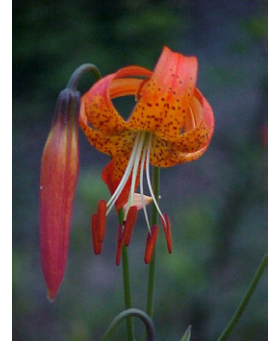
VOLUNTEERS NEEDED

Bulb Sale Committee Chair Needed Desperately! Our Society needs to have a Chair and many sales leaders on the committee to run the Bulb Sales for 2013. Contact pres@arls-lilies.org for information if you have any interest.

L. PARDALINUM

Editors Note: *In 2008 Darm Crook provided a number of articles on a huge assortment of species lilies which he has grown at his home in the Northwest Territories, for ARLS to include in newsletters. I don't believe we've had room to print one for over a year now, so I am happy to include this article on the lovely and graceful L. pardalinum for your reading pleasure.*

Photos
copyright
Darm Crook



I suspect this species is growing at the very edge of its cold tolerant abilities in my zone 1 garden. It does not flower every year unless planted in full sun and its ability to increase in my gardens is very slow, so far only one bulb has produced clones. L. pardalinum flowers at the same time as L. canadense which is early enough to set viable seed. The seed are immediate hypogeal cool germination, as such like most other Western North American lilies they may never germinate if held at temperatures other than 9 to 11 degrees Celsius. If they were to germinate they may never produce any leaves. This lily is also susceptible to botrytis, but not nearly as much as L. Canadense.

The first planting of three bulbs of this lily was in 1998, three additional bulbs were purchased from the SLPG in 2002. In 2003 there were no plants that flowered, the ones from the SLPG never even sprouted, I thought they hadn't wintered. That failure to sprout probably wasn't the lilies fault, by the time the bulbs were received we had an inch of frost in our soils surface plus a couple inches of snow, the bulbs were planted through this. In 2004 the bulbs from the SLPG sprouted and all six of my stems flowered that year. In 2005 only one stem flowered. The maximum any stem has produced for me is four buds in an umbel inflorescence on nice straight stems. The foliage is set in whorls. The stems will, on a good year reach a height of 4 foot 6 inches; on average they are 40 to 48 inches tall. From plant to plant there is a great deal of colouration variation of the flowers.

Darm Crook
Hay River, NWT.
Zone 1

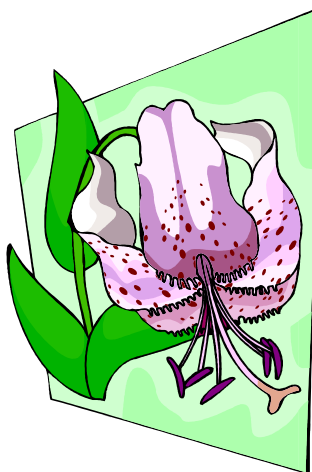
Events

***Please check the web site for
last minute updates & changes

ARLS MARTAGON SHOW
July 6 & 7, 2013
Devonian Botanic Gardens
Devon, AB

ARLS ANNUAL SHOW
July 20 & 21, 2013
Central Lions Centre
11113 - 113 Street, Edmonton AB

EHS BENCH SHOW
Edmonton Horticultural Society
August 26, 2013
Fort Edmonton Park, Edmonton AB



*If you have Events
or other news to
be included in our
newsletter please
contact news@
arls-lilies.org*

ARLS MARTAGON SHOW
July 5 & 6, 2014
Devonian Botanic Gardens
Devon, AB

ARLS ANNUAL SHOW
July 19 & 20, 2014
Central Lions Club
Edmonton, AB

ARLS SEMI-ANNUAL GENERAL MEETING
October 19, 2013
750 - 9TH Ave SE Fort Calgary, Calgary AB
Meeting 10:00 AM Seminar after lunch
non-members - \$5.00 to attend seminar, members - no charge
Seminar Speaker: TBA

ADDRESS:

Alberta Regional Lily Society
c/o Britta Johnson, Treasurer
PO Box 87523 Edmonton, Alberta
T6E 0R6

June 2013
Copyright © 2013 Alberta Regional Lily Society
All rights reserved.

ARLS Affiliates

Alberta Horticultural Association
icangarden.com/clubs/aha
Calgary Horticultural Society
calhort.org
Edmonton Horticultural Society
edmontonhort.com
North American Lily Society
lilies.org