



**Fred Tarlton**

March 10, 1910 - October 23, 2013

*When memories bloom  
it's always Spring,  
And life in passing  
by will bring,  
The secret of  
unforgotten flowers,  
Of merry times  
and golden hours.*



ALBERTA REGIONAL  
LILY SOCIETY  
NEWSLETTER

# The Bulblet

VOLUME 28, NUMBER 4

WINTER 2013



# Board of Directors



## PRESIDENT

Laurie Hepper (to 2015)  
9739 146 ST, Edmonton AB T5J 2Z3  
Phone 780.455.0434  
pres@arls-lilies.org

## VICE PRESIDENT

Bill Mackay (to 2015)  
Box 6262 Innisfail, AB T4G 1S9  
Phone 403.227.3563  
vice@arls-lilies.org

## PAST PRESIDENT

Vacant

## SECRETARY

Lorne Kaban (to 2015)  
Box 7492, Bonnyville AB  
T9N 2H8  
Phone 780.812.3533  
sec@arls-lilies.org

## TREASURER & MEMBERSHIP

Britta Johnson (to 2015)  
9115 67 Ave NW, Edmonton AB T6E 0N3  
Phone 780. 433.7869  
treasurer@arls-lilies.org

## DIRECTORS

Cecilia Bertram (to 2014)  
9716 67A St Edmonton AB T6B 1S2  
Phone 780.469.1085  
bertramc@telus.net

Bryan Bennett (to 2015)

5223 40 St Close, Innisfail AB T4G 1G5  
Phone 403.227.5178  
legman@telusplanet.net

Mike Danchak (to 2014)

8823 - 41 Avenue, Edmonton AB T6K 1G6  
Phone 780.462.0615  
mikedanchak@yahoo.ca

Ieuan Evans (to 2014)

127 27019 TWP RD 514, Spruce Grove AB  
T7Y 1G5  
Phone 780.987.4398  
ieuan@tbwifi.ca

Arnold Semeniuk (to 2014)

12, 27005 TWP RD 511, Spruce Grove AB  
T7Y 1G8  
Phone 780.987.4763

Suzanne Stach (to 2014)

P.O. Box 56, Gibbons AB  
T0A 1N0  
Phone 780.710.0775  
sueingabs@gmail.com

Kathy Strawson (to 2015)

14312 106B Ave, Edmonton AB T5N 1E9  
Phone 780.452.9741  
kstrawson@gmail.com

Adam Yakabuskie (to 2015)

235 Prestwick Mews SW, Calgary AB T2Z 3X7  
Phone 403.244.9073  
martagon@shaw.ca

## LIBRARIAN

Terry Willoughby (Board Appointed-to 2014)  
3, 54029 RR 275 Spruce Grove AB T7X 3S6  
Phone 780.968.1818  
library@arls-lilies.org

## WEB EDITOR

Shauna Willoughby (Board Appointed-to 2014)  
3, 54029 RR 275 Spruce Grove AB T7X 3S6  
Phone 780.968.1818  
webeditor@arls-lilies.org

## NEWSLETTER EDITOR

Lynnette Westfall (Board Appointed-to 2014)  
RR 1, Edberg AB T0B 1J0  
Phone 780.877.2547 Fax 780.877.2540  
tech@arls-lilies.org or news@arls-lilies.org

*Volunteers are  
always needed  
to help with or  
manage various  
projects - call a  
director today if  
you can help in any  
way!*

## Future BOD Meeting Dates:

Feb. 2, 2014 Crestwood Hall, 11:45 AM  
May 25, 2014 Time & Place TBA  
Aug. 10, 2014 Olds College, 1 PM  
Nov. 23, 2014 Conference Call, 1 - 3 PM

## General Meeting Dates:

Winter Mingle February 2, 2014  
Annual General Meeting April 26, 2014  
Semi-Annual Meeting October 18, 2014



# Editor's Notes

Greetings to our members, **all 130 of you!** Are keeping yourself warm & wonderful in anticipation of the holiday season soon upon us? No doubt you've realized this newsletter is arriving later than usual. My sincere apologies, I do try to get it out by December 1 so it isn't forgotten in the holiday rush but this time around Canada Post had other ideas and lost the USB drive which was sent to me with much of the information I needed. As a result, a second mailing was necessary which of course meant a delay!

I have to admit it was probably the most difficult issue I've worked on yet, it isn't easy to pay tribute to a man as revered as Fred Tarlton. This issue is a final tribute to this much loved, greatly admired man who was such an integral part of this society from its inception. After reading this newsletter, I trust the members who have never had the pleasure of knowing or meeting Fred will gain some understanding of the huge role this man played not only in our society but in the lily world around the globe. More important than his contributions regarding lilies, are the friendships that were made over his many years of involvement with ARLS and it's members. Fred was more than a mentor, he was also a very good friend to many people. He will be sorely missed, I suspect that will really hit home when the next Show comes around for Fred always attended the shows faithfully.

Many of the photos of Fred shown here you may recall seeing in the past. Some photos have been in previous issues and were also used in a PowerPoint presentation at the AGM in 2010. This presentation has been converted into **a digital movie, a pdf file and** along with the **PowerPoint file are available as a download** to our members who receive the newsletter via the internet. There are **also a couple other extra files** about Fred **available for download** only.

The **Winter Mingle is going to be different this year**, be sure to **read page 7** for more info. The 'Tarlton Method' for **seeding martagons is on page 18**, this was subbed in place of the 2nd part of the *Growing & Collecting Lilies from Seed* in the last issue. If you'd like to try it but need seed, send an email to me (webmaster@plantlilies.com) and **I'll be happy to send a pkg of open pollinated martie seed** to you.

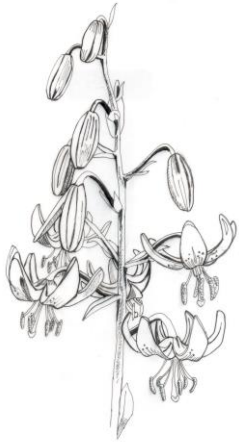
As always, **your feedback and suggestions are appreciated**. Remember, I can only include information as it is submitted. This applies to information on ARLS business too, if you wish to read more about something in particular please bring it up at a meeting, or contact a director or member involved with the topic directly and request it be put in the newsletter.

Final words - **IT'S MEMBERSHIP RENEWAL TIME**. Don't forget to **send in your renewal right away**, with the Holiday season almost upon us it is too easy to forget! If you didn't receive the form or a reminder by email, no worries...it means your good for at least another year!

Until next time...

Lynnette Westfall

# President's Message



## From the desk of the President to the membership December 2013

I got a new garden this year and have some plants transplanted from the one that is in the process of becoming a parking pad. I am looking forward to filling it up next year. My big delight this year was the late Indian Summer, I had flowers blooming at the end of September and into October and luckily able to bring in a pot so had Silver Scheherazade bloom for Thanksgiving weekend inside.

I would like to give a **BIG Thank You** to all the volunteers who worked the bulb sales. Without your help we do not make revenue to help us with our projects. The general revenue helps us pay for the judges & volunteers luncheons at the Lily Shows and the speakers fees of members as well as other expenses not covered by AGLC casino funds. I think the sales were well attended and the Westmont sale did the best of all the Fall sales. Our Calgary sale did not attract any one, but the ones attending the SAGM so not sure what to do about that venue. The old venue was not well attended either. We may go to an order system for Calgary and south and have a central pickup point or COD orders. Any thoughts from the southern members would be welcome. Our leftover bulbs are again into storage, but are less in number this year so hope that they will all sell well in Bonnyville. It is a very diverse set of bulbs that many would not have seen before. The highlight was Ieuan Evans newly registered martagons that made an appearance at our sale and silent auction at the SAGM. I predict the Purple Ozelot to command high prices until everyone's appetite is satisfied.

ARLS will be refurbishing the Devonian Botanic Gardens Asiatic beds so keep in mind we will need to have a bulb digging party the staff at the Devonian are going to work to schedule a time for us in 2014. In the mean time we are in the planning stage of new beds and bulb lists. Any of our beds in Olds, DBG and Calgary needing cultivars please send in your wish lists in February for next years purchase.

To close we lost one of our founding members this past month. Fred Tarlton passed Oct 23 and the quiet elegance of this gentle man will be sadly missed by all that knew him. I attended the memorial along with other ARLS members to wish Fred's family all the best. I know that many of us will be sharing memories of Fred and the way he shared his lily knowledge with them. I look forward to hearing every one of them. Each of us will remember him in an individual way.

Just a note - any lily you planted last year should be ready for the 2015 NALS show.

And remember report a sighting [lilybeetle@arls-lilies.org](mailto:lilybeetle@arls-lilies.org) it is in your ALBERTA. It is in Edmonton, Sherwood Park, St Albert, Fort Saskatchewan, Olds, Calgary and other places. Check out the new website from Carlton University <http://lilybeetletracker.weebly.com/>. We are promoting this site too. The site has begun to get dots in the Edmonton area so the information is getting to the public, unfortunately so is the beetle.

See you at the Winter Mingle  
Best Regards and good growing,  
Laurie





# MEMBERS - NEED TO KNOW INFO

## ARLS Logo

Would you like to see a new logo or a modernised current logo?

Eugene Fox designed the current logo many years ago, it has been coloured since that time.

Do we want to keep it or go for something different?

Give us your thoughts.

Contact Bill Mackay (vice@arls-lilies.org).



Follow ARLS on twitter  
@ALBERTA\_Lilies

**Our next Casino fundraiser will be in  
APRIL, MAY or JUNE 2015 at the  
Argyle Casino.**



Look who's **NEW** to FaceBook!  
<https://www.facebook.com/Albertaregionallilysociety>

## ARLS

has a new mailing address:  
*PO Box 68183 Bonnie Doon  
Edmonton, AB T6C 4G0*

## GARDEN TOUR - OLDS COLLEGE

August 10, 2014 starting at 10 AM, with a pot luck lunch to follow. **All members are welcome!** Board of Directors will be holding a meeting at 1 PM.

## MEMBER BENEFITS

Members receive discounts at the following businesses:

\* ALL SEASONS GARDEN CENTRE. 10027-81 AVE. EDMONTON 10% discount. Membership card must be presented and discount may not apply to all products.

\* APACHE SEEDS LTD. 10136 149 ST., EDMONTON 10% discount. Membership card must be presented and discount may not apply to all products.

\* CANNOR NURSERIES LTD. TWP RD 514 WOODBEND RD, SPRUCE GROVE (west of Devonian Gardens) 10% discount. Membership card must be presented and discount may not apply to all products.

\* ELLERSLIE GIFT & GARDEN 10330 Ellerslie Rd SW, Edmonton Membership card must be presented prior to purchase and discount may not apply to all products.

\* VALLEY K LILY RANCH AKA plantlilies.com 15% discount on all bulb orders, excluding shipping. **Be sure to state you are an ARLS member and wish to receive the discount**, membership is verified with ARLS due to difficulty in showing member card via internet, phone, etc.

## ARLS Seminars

Seminars and workshops are planned for each spring and fall, typically they start immediately after the general meeting. Members attend seminars free of charge, guests and non-members must pay \$5.00 each. Check the web site for most accurate information.

## ARLS Bulb Sales

Members receive a 10% discount on purchases as well as the opportunity to **volunteer helping with sales and preparation**, which **entitles you to reserve bulbs in advance of the sales!**

# ANNUAL SHOW DEMO AND HANDS-ON WORKSHOP

*Submitted by Cecilia Bertram*



*Marie Wenger demonstrates as she speaks to attentive participants.*

ARLS held an information session, demonstration and hands-on workshop on Creative Design at the Annual Show this year.

Fourteen participants, full capacity, registered for the event and received an introduction sheet prepared by Cecilia Bertram and Marie Wenger at the beginning of the session with information about the principles and elements of design, a comparison of classic design and creative design, notes on freestyle design and the National Garden Clubs Creative Floral Design Style, which is used in the NALS Design Section

Shows.

Marie spoke on and demonstrated the different aspects/characteristics of creative design that is also referred to as modern and contemporary design. She mentioned some of the differences between classic/traditional and creative design and noted that both styles of design follow the principles and elements of design but creative design does so less rigidly. She demonstrated the proper way to shape oasis at the corners so that floral material stays in place more solidly.

Creative design is an expression of the designer's ideas using her/his imagination, originality and creativity to select their materials and organize them into their design. The lily is a beautiful form flower and lends itself very well in Creative Design as this style tends to be minimalistic with free space which lilies should have to see their beauty. In this Style, foliage can be manipulated, trimmed, etc.

Exhibitors may already be growing suitable foliage in their garden that can be used for Creative Design without need to purchase tropical foliage. Some good examples of foliage that may be growing in a garden are Hosta, Berberis, Heuchera, Geranium leaves, Iris, Peony and different kinds of grasses that are great for creating angles.

Marie mentioned some of the creative design types: angular, cascade/waterfall, creative line designs, spatial-thrust, stretch, synergistic, and she demonstrated or showed examples of several of them including the waterfall, stretch, spatial-thrust and angular. Creative design goes beyond the basics and traditional, utilizing many different techniques, such as bundling, binding, layering, shadowing, stacking, terracing and leaf manipulation.

Marie suggested several objects that can be adapted as containers for designs ranging from painted or covered fish and vegetable cans to PVC pipes and pipe joints sealed to make them water proof instead of purchasing expensive vases. Less is more in creative design.

The participants were each given a stem of lilies and then chose the greens and other flowers [generously donated by several of the ARLS members and we sincerely thank them for their generosity] to begin creating their designs. It was interesting to see how quickly everyone started trying the new techniques and the imagination and creativity they showed in assembling their designs. We are looking forward to seeing new designers in the show next year and welcome them and previous designers to display their talents.



*Above - example of a stretch design. Below - example of a spatial thrust design from the rear point of view. Photos this page copyright Cecilia Bertram.*





## Winter Mingle 'Winter Wonderland' - Feb. 2, 2014

The Winter Mingle is a day to join with other gardeners and **see the colours of summer with photos**, lots and lots of photos.....and maybe learn something new or just talk to someone new about gardens and lilies.

A **pot luck table of goodies** is always on hand, and **ARLS provides the beverages**. Come out and meet the Board, **bring a friend or neighbor** interested in floral design or gardening, there is no charge to attend! A **Silent Auction table** will be set up, who knows you just might find the best lily treasure there. Perhaps some gardeners will be bringing in seed to share with others?

This year **we are going to have the usual slide show plus a mini Design show**. We will have a floral judge who will give us a point by point commentary on why a design is good, as they judge the designs. The categories are listed below. **Ribbons will be awarded and a clerk will be needed**. This show/workshop is to help those who always wonder "how come that one got the ribbon?" **Anyone is welcome to participate and enter a design**, or just show up to listen to the commentary from the judge.

### Mini Show Classes

1. Basket (Santa's Secret) must contain a visually semi-hidden element/ secret
2. Creative design of your choice (Winter Wonderland)
3. Spatial Thrust design (Snowball Jetting)
4. Stretch design (Drifting Snow)

- Each entry must have a show entry card - call 780-455-0434 (Laurie) for cards or fill one out that day.
- Genus liliaceae must be dominant in all designs - do not remove anthers.
- No artificial plant material permitted, you may use fresh or dried natural materials.
- All ages & experience encouraged. This is a learning show!
- Anyone wishing to donate their design for a draw at the end of day please indicate this at entry registration.

\*An example of a spatial thrust and a stretch design can be seen in photos on the previous page. Please **see page 23 for a synopsis of designs** provided by Cecilia Bertram.

**PLEASE NOTE:** Information on principles and elements of design, as well as creative design and other aspects of floral design, can be found in most design books available at the library or book store and online by searching the subject titles. Terry Willoughby also has several design books available in the ARLS Library that are available at the general meetings. You should call Terry prior to a meeting, if you want him to bring design books. There are hands on Basic Floral Design classes offered in Edmonton at Metro College or at the Floral Arts Society in St. Albert; Cecilia will be able to provide a contact for the Floral Arts Society.

# 2013 FALL BULB SALE REPORT

*Submitted by Laurie Hepper*



*Arnold & his wife Cathy have managed the Westmount sales for many years. Here is Arnold with Laurie who also helps by ordering the bulbs, among other things.*

## BULB DRAW WINNERS:

- Gwen Nicolai- Westmount
- Jihina El-Hajj- Muttart
- Carol Beart- EHS

11 draw entrants asked for more ARLS information.  
48 draw entries at Westmount & Muttart, EHS had 24 draw entries.

Westmount Mall Farmer's Market: 4 new memberships, 6 books, 342 bulbs provided, 25 bulbs sold at packaging and 247 sold at the market. ARLS members bought 162 bulbs. Revenue from bulbs \$1758.00.

Muttart Conservatory ADMISSION FREE DAY: 1 renewal membership, 1 book, 307 bulbs provided, 167 sold. ARLS members bought 55 bulbs. Revenue from bulbs \$1450.00.

Edmonton Horticultural Society Awards Night meeting: 2 new memberships, 1 book, 345 bulbs provided, 150 sold.

ARLS members bought 115 bulbs. Revenue from bulbs \$1099.00.

9 bulbs were used as draw bulbs and EHS door prizes.

Bill Jopling, Leo Krupka and Lilycrest Gardens donated lily bulbs for our sale this year. Thank you for supporting your Society.

The Calgary sale sold 72 bulbs of the 193 remaining bulbs and Revenue was about \$550.00. Sadly we did not get any walk-ins to buy bulbs but members availed themselves of the end of day sale prices.

Total 790 bulbs for sale this fall. We ended the year with 112 bulbs left over and put in storage. GOOD WORK EVERYONE! I will work on having 700 very interesting bulbs for next fall.



*ARLS members at the bulb sales held at EHS & Westmount in September.*



*Photos this page copyright Cecilia Bertram.*



Junior Silver Sweepstakes Award presented by Kathy to Katie Deguars, accepted on her behalf by Mike Danchuk.



leuan wins a few Awards, including the Fred Tarlton Award. He needs help to hold them and Lorne & Kathy oblige.



Below: Kathy presents Terry with Silver Sweepstakes Award from the Annual Show.



Photos this page copyright Laurie Hepper.

Right: Lorne Kaban accepts the Junior Best In Show & Junior Gold Sweepstakes on behalf of his son Evan.



## OCTOBER MEETING & AWARDS

No reports were submitted, only photos.

Left: Cecilia accepts the Lilium Award. Right: Lorne helps to hold some of the many Awards, including the Gold Sweepstakes, won by Bryan Bennett.



Above left: The Photo Contest entries, looks like the first Photo Contest was a success!  
Above right: The winning Photo Contest entries. Adam Yakabuskie (center) was the winner of the \$25 gift certificate donated by Valley K Lily Ranch. Wilf Maul (left) & Suzanne Stach (right) also placed in the top 3.



# REMEMBERING FRED TARLTON.....



*Fred Tarlton at his 100th Birthday Celebration March 2010.  
Photo copyright Laurie Hepper.*

On Wednesday, the 23 of October 2013, Fred joined his beloved wife Helen. He had been prepared for this day, stating frequently that he was ready to check out. He was weary. Until May of this year, Fred lived in his own apartment, seeing to his own breakfast and lunch, then taking his evening meal with the other residents of the Ashbourne residence in Edmonton. He remained an avid reader until his passing at the Youville Nursing Home in St. Albert. An illness brought him to the Sturgeon Hospital in St. Albert and from there, he went to the Youville Nursing Home for the last five months of his life, where I was fortunate to visit him weekly. He regaled me with stories of his early years of teaching and with his time in the

Royal Canadian Air Force. This wonderful gentleman never failed to thank me for coming to see him.

Fred was born on March 15, 1910 in Derbyshire, England. He came to Canada with his family at the age of three to settle in Calgary. In July of 1916, the family moved to Gadsby which is southeast of Stettler, in central Alberta. Then they moved to Halkirk, east of Red Deer where Fred's father ran a hardware store, a sheet metal shop and a farm equipment dealership. It amused Fred to say that his father was trained in painting, plumbing and paper hanging. During his growing-up years, Fred helped in the store where he became skilled as a tinsmith. He made pails and other utensils from tin that were useful in the rural life. He also became skilled at fixing farm equipment. He continued making tin trays and pots for his plants throughout his life.

*Fred approximately 11 years old. Photo copyright Nancy Alexiewicz.*

Fred's mother, who had been chronically ill, died in the spring of 1919. Fred indicated that she had surgery to remove her ruptured appendix, but this was before the advent of antibiotics and she succumbed to infection. Because it was difficult for Fred's mother to care for the children, Fred was sent to live with an aunt in Calgary. At age 11, Fred attended one year at Western Canada College in Calgary. During his stay in Calgary, Fred contracted first the flu, then Rheumatic Fever and later Scarlet Fever. At this point, Fred was sent home to Halkirk. The doctor recommended getting some fresh air as a treatment, so Fred's dad gave him a .22 rifle and some shells and sent him outside to shoot gophers. From 1919 until his father remarried in 1926, the boys and household were looked after by a series of housekeepers. After the marriage, another brother named Arthur was born in 1927.





When Fred finished school, he went to work in his father's business, until times got tough in the late 1920s. Fred told me that he only sold \$0.50 worth of merchandise during one full day at the store, so his father recommended that he find something else to do.

Right - Fred's Normal School portrait.  
Bottom left - Fred in his RCAF Lieutenant uniform.  
Bottom right - Fred shortly after earning his wings in the Air Force.  
Photos copyright Nancy Alexiewicz.



In 1929, Fred decided to become a teacher. Fred attended Normal School in Camrose, Alberta for one year and began his first teaching job at age 20 at Island School - a one room country school near Halkirk, where he stayed for two years. He had been advised that the school board customarily fired teachers every two years from that school, so he decided to quit before they could fire him. His next job was in a two room school in the Village of Pibroch - about fifteen miles north of Westlock (north of Edmonton) where he remained from 1932 to 1937. He told me that they had split grades, so one year they taught the grade five and six students the grade five curriculum, and the next year everyone was taught the grade six curriculum.

While in Pibroch, Fred boarded at the Pibroch Hotel. There, the hotel book-keeper, Helen Weir, caught his eye. A courtship ensued. In 1937, Fred moved to Rich Valley, south of Westlock to a two room school. In August 1938, Fred and Helen were married. They remained in Rich Valley through 1939. During this time, Fred befriended *Georges Bugnet (pronounced Bewnay)*, the eminent francophone writer, rose hybridizer (the Bugnet Roses) and horticulturist, who was also secretary of the school board. Fred studied French by correspondence and practiced conversing in French with Georges. During this time, Georges shared his plant hybridizing philosophy with Fred: "Hybrids have to be hardy in Alberta's climate".

Fred moved on to Provost on the Alberta/Saskatchewan border to teach in 1939-1940. From there Fred moved to Spruce Grove near Edmonton to teach from 1940 to 1942.

In April of 1942, Fred joined the Royal Canadian Air Force. When he initially applied, he was turned down because of decreased hearing in his left ear. He then went to his local practitioner to be assessed. His local practitioner indicated that the reduced hearing was in a range that was not likely to cause any problem for him and approved his application to join the military. He initially applied to work on the ground crew servicing the planes in the military, but there were no vacancies there, so he became part of the flight crew, as navigator. He spent his enlisted years on the east coast of Canada and United States patrolling for German submarines. One of Fred's tales of his time in the Air Force was when he happened to go from his spot in the plane up to the cockpit and found that both the pilot and co-pilot had fallen asleep and the



plane was on auto-pilot. He liked to speculate as to what may have happened had he not gone up to the cockpit.



*Fred, Helen & Nancy in 1944.*

Nancy, his daughter was born in December of 1942. She was three months old before Fred first saw her. After Fred joined the RCAF, Helen lived in Edmonton, then moved back to her family home in Linaria, near Westlock.

Fred was decommissioned in July 1945. At this time, Fred returned to teaching, as Principal at the Stony Plain school west of Edmonton (grades 1-12), for the 1945-46 school year.

He attended the University of Alberta in Edmonton during 1946-47, then returned to the position of Principal in Stony Plain from September 1947 to July 1953. When the separate high school was built in 1953, he became Principal of it until 1956. From there, Fred moved to Edmonton and taught at the West Glen High School in the 1956-57 year. He moved to Ross Sheppard High School thereafter, until his retirement in 1972. He taught mathematics and became the head of the math department there. He felt that he had the best of both worlds as he had contact with the students, but had enough administration duties to keep it interesting. During those years, he taught mathematics to my husband Cliff French. Regularly, he brought little math puzzles to class to challenge the students to think. Cliff felt that Fred was certainly one of the best teachers he ever had during his school years.

During Fred's post retirement years, he became a grandfather. His grandson Michael was born in 1972, and his granddaughter Corianne was born in 1974. In 2007, he became a great grandfather to Levi, and in 2009, his great granddaughter Sadie was born. Corianne and family live in central Saskatchewan, and his daughter Nancy in northeastern Saskatchewan 500 miles away, which made visiting Fred a little difficult.



*Corianne with Fred in 2003. Top photo & this photo copyright Nancy Alexiewicz.*



*Fred in August 2012 with one of his trumpet hybrids. Photo copyright Laurie Hepper.*

Going back to his time after the war, Fred took up his lifelong hobby as a gardener. In 1953, he began collecting different seeds of the lily species, in particular martagons from mail order catalogues. He first used garden space in Spruce Grove and began developing new lily varieties. He later purchased an acreage east of Edmonton, where he grew lilies, fruit trees and a multitude of other plants. He also kept bees there. When he sold this acreage, he dug up his front lawn in Edmonton to plant his lilies, and interspersed a few annuals there to give color to the yard when the lilies weren't blooming. Dur-



Award presented  
to Fred by  
ARLS in 2010  
Photo copyright  
Laurie Hepper



ing his retirement years, he won numerous awards for his lilies, including:

- David Griffiths Award in 1977, for the best stem of an unnamed hybrid seedling grown from seed
- In Saskatoon at the 1977 NALS show, Fred won both the Harold F. Comber Award for the best lily species (Martagon Album) and the Claude Shride Award for Martagon Album in addition to the best martagon in the show
- E.H. Wilson Award for contribution to the genus *Lilium* in 2003
- Edmonton Horticultural Society honoured Fred with a trophy for his lifetime achievements in 2009
- ARLS awarded Fred a Mentor Award in recognition of his huge role in giving a start in lilies to so many people in 1995.
- The NALS Regional Award medal was presented to Fred in 2007. Terry Willoughby gave Fred a great tribute speech and Fred entertained us with his favourite limericks.
- In 2010 an award for his 'contribution to the genus *lilium*' at his 100 year life marker.

The ARLS Martagon Show Best in Show award is now named the Fred Tarlton Award, in honour of Fred's passion for martagons. ARLS also sponsors a NALS Show Award, which is for the martagon with the highest bud count. This award was also renamed the Fred Tarlton Award.

Fred's martagons have proven to be good garden lilies as well as fine show lilies. During one NALS show held in Edmonton, *Moonyeen* won the Alberta Regional Award for a stem with over 60 blossoms and buds. *Amelita* picked up the Claude Shride Award. *Moonyeen* consistently wins ribbons and Best in Show awards.

The list of lilies that Fred has hybridized and registered is included here for reference. Fred also registered lilies for other hybridizers, most notably *Fred Fellner*. *Marvin Joslin* registered four of Fred's hybrids from 1988. *Eugene Fox* registered a lily of Fred's in 2004. There is a martagon named *Fred Tarlton*, bred and named by a friend of his (Robert Erskine). ARLS and its members are currently working at registering three more of Fred's seedlings. ARLS is working towards placing a sample of each lily he has bred into public gardens in Calgary, as the first of many Alberta hybridizer beds to be developed.

This dear man had a long and very productive life of 103 plus years. Hopefully many of you have a memento of Fred's hybridizing prowess in your garden.

*Editor Note: The information provided here on Fred Tarlton's very hectic life was written up as a Eulogy by a close family friend, Sharon French. Sharon lives in St. Albert and visited Fred regularly. Some minor explanatory editing was done by Ieuan Evans and Laurie Hepper. I added photos, edited spelling, grammar, etc. and minor changes to ensure it fit in space available.*

# Remembering Fred Tarlton .....

A very grateful thank you goes to all those who shared photos with ARLS for these pages. Many were used in previous presentations or publications at ARLS events. Some of the martagon photos featured on the next page came from the NALS Martagon CD2 project. Unfortunately we could not source photos for two of Fred's registered lilies; Alphard & Alberta Sunrise. Please note that Serena, Darsie and Enigma are seedlings of Fred's which are unregistered at this time.



Fred, Nancy and Corianne at his 100th Birthday celebration March 2010. Photo copyright Nancy Alexiewich.



Marilyn Matlock and Fred at the Annual Show in 2010. Photo copyright Laurie Hepper.



Terry Willoughby presents Fred with the NALS Regional Award Medal in October 2007



Fred and Terry at the 2011 Annual Show. Photos this row copyright Laurie Hepper.



Fred and friends from ARLS at his 100th birthday celebration in Stony Plain March 13, 2010. Front row, left to right - Dianne Sloan, Sandy Carter, Fred Tarlton, Marilyn Matlock, Linda Lockwood. Back row, left to right - Ieuan Evans, Kathy Strawson, Terry Willoughby, Shauna Willoughby, Bill Jopling. Photo copyright Laurie Hepper.

Fred and Helen around the time of their 50th Wedding Anniversary. Photo copyright Nancy Alexiewich.







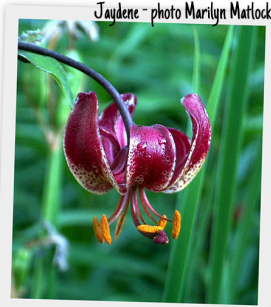
Northern Explorer - photo Laurie Hepper



Attiwaw - photo Frans Officer



Nancy - photo Lynnette Westfall



Jaydene - photo Marilyn Matlock



Amulet - photo Lynnette Westfall



Akimina - photo Frans Officer



Sarcee - photo Laurie Hepper



Moonyeen - photo Frans Officer



Mamaska - photo Marilyn Matlock



Briana - photo Kevin Frey



Amelita - photo Laurie Hepper



Corianne  
photo Lynnette Westfall



Snowbird - photo The Lily Nook



Cool Breeze - photo Laurie Hepper



Serena - photo Laurie Hepper



Darsie - photo Laurie Hepper



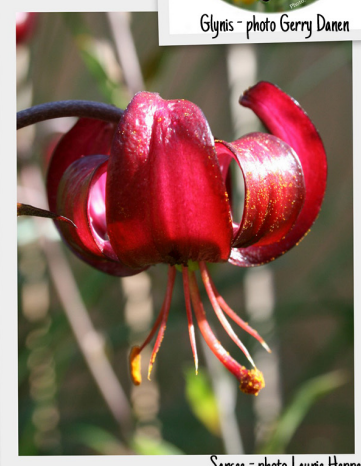
Trinita - photo Kevin Frey



Glynis - photo Gerry Danen



Charlene - photo Frans Officer



Sarcee - photo Laurie Hepper



Enigma - photo Lynnette Westfall



Moonyeen - photo Frans Officer



# Fred Tarlton Hybrids

REGISTERED	CLASS	NAME
1972	Asiatic	Amulet
1972	Asiatic	Snowbird
1980	Asiatic	Corianne
1988	Martagon	Akimina
1988	Martagon	Attiwaw
1988	Martagon	Charlene
1988	Martagon	Jaydene
1988	Martagon	Moonyeen
1988	Martagon	Sarcee
1991	Asiatic	Alphard
1991	Asiatic	Mamaska
1993	Martagon	Amelita
1994	Asiatic	Cool Breeze
1999	Martagon	Alberta Sunrise
1999	Martagon	Briana
1999	Martagon	Glynis
1999	Martagon	Nancy
1999	Martagon	Trinita
1999	Martagon	Northern Explorer
Not	Martagon	Darsie
Not	Martagon	Serena
Not	Trumpet	Enigma

*\*Editor Note: Certainly there are more of Fred's unregistered lilies in circulation than the three listed here. Those listed were named by Fred himself and I knew of them, or they were brought to my attention to be included here. If you have any information and especially photos of other varieties ARLS would love to include them in future newsletters.*

Fred Tarlton registered the following lilies on behalf of other people:

REG.	CLASS	HYBRIDIZER	NAME
1991	Asiatic	Fred Fellner	Melusina aka Nelesina
1991	Asiatic	Fred Fellner	Gienah
1994	Asiatic	Mrs. C.C. Bangs	Nataka aka Alexander

Photos below from Devonian Botanic Gardens, the home of of ARLS martagon lily beds. Some of the Tarlton martagons are planted here and once mature they are dug for ARLS bulb sales.



Right: A good example of a fasciated stem taken at Devonian Gardens.

**Fasciation** as defined at [en.wikipedia.org](http://en.wikipedia.org): Fasciation (or cresting) is a relatively rare condition of abnormal growth in vascular plants in which the apical meristem (growing tip), that normally is concentrated around a single point and produces approximately cylindrical tissue, instead becomes elongated perpendicularly to the direction of growth, thus producing flattened, ribbon-like, crested, or elaborately contorted tissue.

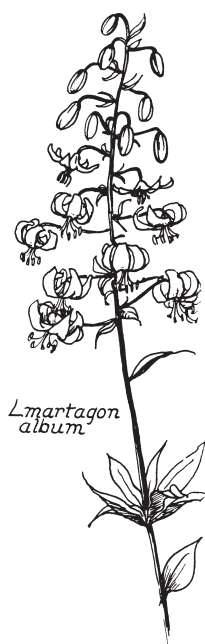
Photos this page copyright Laurie Hepper.





# Fred Tarlton...as told by the late Gene Fox

A lifetime of passion for horticulture has made Fred Tarlton a most knowledgeable plantsman. Born in 1910, he had a long career as an educator and administrator in Alberta schools. However, that significant achievement pales beside his 75-year avocation of horticulture. His urban yard could not contain all the plants Fred wanted to grow; so he purchased a large acreage near Edmonton, Alberta, while his home remained in the city. With all that land to use, Fred established an orchard and quite a few lily beds and perennial beds. He built a garage structure by his gardens to find shelter from rain squalls and to shelter his equipment and tractor. His wife, Helen, could also accompany him and rest in the structure between helping Fred with his gardening tasks and setting out the lunches she brought. Early on and over 45 years ago, Fred started to devote a lot of time and space to martagon lilies. At that point in history, he may have been one of three or four persons in North America to have been smitten by the beauty and novelty of the martagon subgroup of lilies. From starting a few martagon seeds, Fred branched out to growing bulbs he obtained from mail order and from other lily fanciers around the world. After 10 to 15 years, Fred had several hundred martagon seedlings, a few of the registered clones and several species. He began his incessant hybridizing for specific qualities using his careful observations of martagon growing habits and unique qualities. He attended many North American Lily Society shows and made friends with lily growers elsewhere in Canada and the United States. Through letters and trips, he garnered friendships in Britain and Europe. All the while, Fred hybridized martagons and other types of lilies. His list of registered martagons is long. They are superb lilies and have figured in the parentage of many present day cultivars. Here is a list of some of his registered martagon hybrids: 'Moonyeen', 'Sarcee', 'Amelita', 'Charlene'.



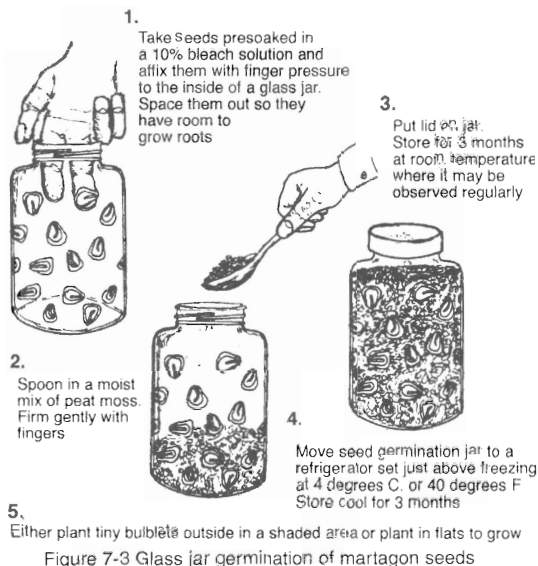
For years, Fred was the only gifted speaker on the topic of growing lilies to be found in the big province of Alberta. Fred has a terrific sense of timing and a wonderful sense of humor, and consequently was in heavy demand. He could keep a horticultural or gardening audience in wrapt attention and in frequent laughter. He taught school long enough to know that one has to keep the audience involved. Fred usually brought along a few jars, some martagon seed and some damp soil mix and all the other paraphernalia to have the audience become participants in starting a jar of martagon seed off toward life. More people have told me that their devotion to lilies was ignited by Fred than I can remember. My own passion for martagons owes much to Fred and to Dan Dale who said Fred Tarlton introduced him to martagons. Alberta is a hotbed of interest in martagons and Fred's generous gifts of bulbs and seed, ready help and kind advice did much to cultivate that wide interest in martagon lilies. For that life work, Fred Tarlton was given the Mentor Award by the Alberta Regional Lily Society in 1995 and the E. H. Wilson Award for an outstanding contribution to the genus *Lilium* by the North American Lily Society in 2003. Fred is a compact man and about 5 foot 4 inches tall, but he has such a presence, such stamina and ability that there may not be another man with his huge stature on North American martagon circles. He remains humble, of constant good humor and he is quick to compliment others.

**Editor Note:** This page was reprinted from the book '*Martagon Lilies*', published in 2006 by E. Eugene Fox, not long before Eugene himself left us. This book is copyright protected, ARLS extends a grateful thank you to Gail Fox for permission to reprint it. ARLS has this same book available for purchase and encourages anyone interested in growing or learning more about martagons to get themselves a copy. Contact a Director, or purchase one at any of the annual shows, bulb sales or other ARLS events.

# Growing Martagon Lilies From Seed

**Editor:** It seemed quite fitting that what you read below should be included, since I promised to continue from the last issue with growing lilies from seed and this issue of the newsletter is a tribute to Fred Tarlton. Below is another excerpt from **Eugene Fox's** book '**Martagon Lilies**' in which he describes a specific way to start martagons from seed, which he learned from Fred. In the book, you will find other methods of propagation as well - another good reason to get yourself a copy if you haven't already!

## The Tarlton Method



Fred Tarlton has developed a process that I think everyone should follow at least once to actually see the whole hypogeal germination sequence.

Mr. Tarlton soaks some martagon seeds in a water/household bleach solution (10 parts water to 1 part bleach) for 10 minutes. He then drains off the solution, takes the wet seeds and places them by hand around the inside of a glass jar. The wet seeds cling easily to the glass sides of the jar. He then spoons the jar full of a damp peat mix, taking care not to dislodge the seeds. Mr. Tarlton always moistens his peat with water to which has been added a complete water soluble fertilizer. When done, the seeds are

completely visible around the circumference of the jar from the outside. Mr. Tarlton says to put the lid on and store the jar on a shelf where you are certain to see it each day. Soon the seeds will swell as they take on water. Next, the rod-like embryo in the seed will distend from the seed. Then, it will swell on the emerged embryo tip into a very tiny bulb.

After 3 months, the jar and undisturbed contents can go into the fridge for 3 months of vernalization. Thereafter, the jar lid can be removed and the jar placed in light and warmth for a few days while the top growth can be seen starting, then turn green as photosynthesis begins. At that point, transplanting or potting on becomes a must. However, by that point, the mysteries of delayed, hypogeal germination have been revealed. The Tarlton Method for small numbers of seeds for the hobby gardener is ideal. Note that the jar must be absolutely clean or preferably sterilized. A fairly large jar such as to equal a water glass in size should be selected. Tiny jars such as the baby food type do not permit enough bulk of medium to maintain moisture and a constant temperature. My own use of the bag method or the Tarlton jar method results in a similar seed-to-mature-martagon success rate of anywhere from 20% to 80%. Remember, that in 6 short months, either of these methods, yields what would happen in nature over a 2 year period.

**Editor Note:** 'The Tarlton Method', including diagram was reprinted from pages 81-82 of the book '**Martagon Lilies**', published in 2006 by E. Eugene Fox. ARLS extends a big thank you to Gail Fox for permission to reprint it.



**North American Lily Society Show 2013, West Des Moines, Iowa**  
**Planning for Calgary 2015 – by Lorne Kaban**

As a member of the NALS Calgary 2015 committee I was given the opportunity to attend this year's North America Lily Society Show in West Des Moines, Iowa. This was my first time at an International Lily Show and it was truly inspiring. It was a great opportunity to network with lily experts from around the world and learn more about this fantastic garden plant. It also made me realize that for those of us up here in Alberta, we only get to enjoy a portion of the entire genus, Sandy Venton from Manitoba said it best; "I have zone envy".

The speakers were great and provided more insights into species lilies, the heritage of some of our modern lilies, the challenges and rewards associated with hybridizing, and the joy of growing this incredible plant in our gardens. The garden tours provided an opportunity to enjoy the Iowa countryside and to see the diversity of the fauna in that region and how lilies play a major role in their garden design. The Show was amazing and every time you wandered through the Show Hall there was a new stem of the 293 that caught your eye and drew you in. They also had a great showing in their design section. One of the most exciting parts of the judging was that one of our very own Ieuan Evan's Martagon stems was in the running for Best Lily in Show and was narrowly defeated after three rounds of voting by Warren and Gail Summers impressive stem of *L. hansonii*.

The members Iowa Regional Lily Society Show committee were extremely gracious hosts and made every one of us attendees feel welcome and at home. They were very generous and willing to answer my endless supply questions regarding the planning and execution of the Show. They set a very high standard for us as we embark on the planning of the 2015 Show, but I am also confident that they will be an incredible resource to us.

If you are curious or want to take your love of lilies to another level you may want to attend the Show in Bloomington, Minnesota in 2014, and better yet if you want to be a part of something great, watch for opportunities to participate in the 2015 Show in Calgary.



## NALS ACCREDITED JUDGES REMINDER

**Remember to send in your NALS Judges Activity Report for 2013.** (send your report to Kathy Andersen [ksa2006@verizon.net](mailto:ksa2006@verizon.net))

Also to those judges who have not judged in a while (3 years) please confirm you still have your NALS accreditation. We will need all our judges for 2015!

We will also be needing clerks for the show and will need a show of interest so we can train you. You will be paired with an experienced clerk, however some of our 2007 NALS clerks have moved up to Judge so we will need some new people to help with the show.



## NALS 2015 - JULY 15-19, 2015 INTERNATIONAL LILY SHOW & CONFERENCE



Alberta Regional Lily Society (ARLS) will be hosting the 2015 International Lily Show and Conference in the city of Calgary, Alberta July 15th - 19th, 2015. An international show is a great way to showcase our province, the city, as well as our society. **We will be looking for volunteers to help make this show a great success.**

**Consider taking out a NALS membership to help support our parent society.**  
Visit <http://lilies.org> for more information.

Volunteers are needed for a wide range of positions,  
**please contact Lorne or Adam** if you are interested in helping out.

Adam Yakabuskie: [martagon@shaw.ca](mailto:martagon@shaw.ca) phone: 403-244-9073  
Lorne Kaban: [dlkaban@hotmail.com](mailto:dlkaban@hotmail.com) phone: 780-812-3533



**Next newsletter due out in APRIL 2014**  
**Submissions deadline March 15.**

**Your contributions be they small or large are most welcome!**



## CLASSIFIED ADS

**Brian Bergman of LilyCrest Gardens** would love to have members contact him about the lily bulbs you may have purchased. He is an avid hybridizer and has supplied our bulb sales with many seedlings that he thinks may be cold climate adaptable. He would like to hear from you about the success and tribulations that the lily you bought is giving you. He has indicated that any report is good as it gives him more data as to whether to register the lily. *Blushed Peach* and *Mars Encounter* have won ribbons at ARLS shows. If you have won ribbons with a seedling, he especially would like to talk to you. Contact: bfberg@rogers.com, phone 416-614-6394. If you wish to contact him by mail call Laurie at 780-455-0434 for the address.

Our **Advertising and Public Relations Chair position is still vacant.** If you have an interest in promoting our Society and events through media advertising please contact [pres@arls-lilies.org](mailto:pres@arls-lilies.org). A list of places and web sites that need to be contacted and the dates for contact are provided. This gets our meetings, sales & shows out to the general public so we can share our lilies & knowledge with others. For the most part, the position involves entering data in different web calendars.

**Olds College Centennial lilies hybridized in Alberta by ARLS members.** For ordering information go to:  
<http://www.oldscollege.ca/onlinestore/#flowers>  
 or to purchase, contact: Karen Viney 403-556-4687



**Bulb Sale Committee Chair Needed!** Our Society needs to have a Chair and many sales leaders on the committee to run the Bulb Sales for 2014. Contact [pres@arls-lilies.org](mailto:pres@arls-lilies.org) for information if you have any interest.

**Our bulb sales are our revenue to support Awards and various expenditures not covered by casino funds.**

# Articles from the 1st Edition of ARLS Newsletter

## SPECIES, CLONES AND STRAINS

BY FRED TARLTON

The three terms in the title sometimes cause confusion, so here is a little explanation.

The **species** are the naturally occurring wild lilies from which all the hybrids have been derived. There are about 100 species, all native to the northern hemisphere. Among the members of a species, there is some variation and continued selection may result in lilies which are superior garden plants to the general run of the wild plants.

When different members of a species have different colored flowers or regularly differ in some other recognizable way, they may be classed as sub-species. There is no sure-fire way to tell when the difference is great enough for there to be two separate species rather than two related sub-species. The distinction is best left to the botanists and they do not always agree with each other.

A **clone** is a group of plants which are genetically identical. They have been propagated vegetatively from a single seedling, which is usually a hybrid although a superior selection from a species may be cloned. The term, horticultural variety or cultivar, is often used to indicate a clone.

A **strain** is a group which are closely related but they are not identical as are the members of a clone. If one can find two clones which, when intercrossed, produce seedlings which are very much alike, the seedlings can be marketed as a strain. There are advantages in doing this. Seedlings will be free of virus diseases and it is probably cheaper to produce a thousand similar seedlings than to get the same number of bulbs from cloning.

Many of the trumpet lilies are sold as strains and that has one drawback for us in Alberta. While the parents have been selected to produce similar looking flowers, there is no guarantee that the plants will be uniform in hardiness. Since we are pretty well on the edge of the area where trumpets can be grown, that means that some members of a strain may winter kill while others will survive our winters. So buying bulbs of strains such as Pink Perfection or Golden Splendor is a bit chancy.

In the International Lily Register the word "grex" is used instead of "strain" and is indicated by the letter "g".

## LET'S LOOK AT THE SPECIES

BY FRED TARLTON

*EDITOR'S NOTE: MR. FRED TARLTON IS A LONG-TIME LILY BREEDER AND HYBRIDIZER WITH A WELL RECOGNIZED FUND OF BOTH SCHOLARLY AND PRACTICAL KNOWLEDGE. WE ARE FORTUNATE THAT HE HAS CONSENTED TO BRING A REVIEW OF A DIFFERENT SPECIES TO EACH ISSUE OF THE NEWSLETTER. THERE ARE OVER 100 SPECIES.*

### LILIUM PUMILUM

Most of the lilies we see advertised or at flower shows are hybrids. They are so popular because they are vigorous and, in general, easy to grow - the species are sometimes more of a challenge. However, one of the species, *Lilium pumilum* or Coral Lily is also easy to grow and its air of delicacy and refinement cannot be matched by any hybrid.

Though the name *pumilum* means dwarf, Coral Lilies are by no means insignificant plants. The wiry stems with their numerous grassy leaves are frequently 60 cm. (2 feet) or more in height, though 40 to 50 cm. (16 to 20 inches) is more common. The flowers are down-facing and of a bright sealing-wax red and range from one to fifteen in number. It is easy to grow Coral Lilies from seed and that is probably the best way to get them as they are not often offered for sale. Besides, they look better in groups than as single plants and buying bulbs in quantity can be expensive. The seed is the quick germinating type and the plants often bloom in the second year.

As well as the red form, there are orange and yellow ones called Golden Gleam and Yellow Bunting respectively. Both were at one time thought to be hybrids the first *L. pumilum* X *L. martagon album* and the second *L. pumilum* X *L. monadelphum*. I don't think anyone thinks this anymore, since many generations of seedlings have not turned up anything but *L. pumilum* characteristics.

Coral Lilies grow wild from north Korea and Manchuria into east Siberia and China. They have been grown in gardens for a long time, being introduced into cultivation in Moscow and Leningrad in 1806. They have certainly stood the test of time.

Coral Lilies do not seem to need any special soil. Some books recommend a light sandy loam but I grow them in soil which is quite heavy. They are stem rooters so, if you do plant bulbs, plant them about 10 cm. (4 inches) deep.

I have a limited quantity of seed of the red and orange forms mixed and it is available to anyone who wants it on a first come, first served basis.

*The first edition of ARLS newsletter was printed in January 1986. Terry Wil-loughby handed a copy of the complete newsletter out to all members in attendance at one of the past Annual General Meetings.*



# SYNOPSIS OF CONTEMPORARY/CREATIVE/ MODERN DESIGNS

*Submitted by Cecilia Bertram*

- Imagination, originality & creativity are utilized for a new approach in the selecting and organizing of components for the design while using the Principles & Elements of Design less rigidly.
- Is an expression of the designer's ideas.
- Even or uneven number of flowers is not of concern.
- Traditional and geometric forms are not used.
- Plant material is grouped rather than scattered.
- Have more than one focal area or centre of interest and more than one point of emergence of plant material, but remember clarity of design. Any part of the design may be dominant.
- May include non-naturalistic qualities.
- Designer positions components according to plastic organization. Plastic organization is used in art to refer to a thoughtful placement of components within a 3D area (height/width/depth) to mold space(s) within the area.
- Objective is to create rhythm & movement through forms and spaces into a full volume of space, especially depth, by eye movement from foreground to middle ground, middle ground to rear ground and rear ground to background and forward again.
- Components may be juxtaposed (adjacent to each other, side-by-side, one behind the other, above & below) to increase illusion of depth. Crossed lines are acceptable.
- Applying technique of penetration of space - is the strong thrusting of plant materials or other physical components through space, usually a diagonal thrusting from foreground to rear ground. Technique may add to balance and rhythm.
- Filler and/or transitional materials are not needed.
- Selecting components having contrasting advancing and receding colours & shiny vs. rough textures create eye movement.
- Layering is a feature.
- Balance is usually asymmetrical-influenced by ikebana.
- Bold exotic plant material is used extensively.
- Container if used is usually strong & sculp-

tured and is an integral part of the design. It may be more dominant than the plant material.

- Woody structures often incorporated, giving depth and interest.
- Accessories-coloured wire, fabric, glass are used for interest.
- Leaves are manipulated-woven, plaited, coloured, twisted.
- Space is not always evident within the design but will always exist around the overall form.
- Mechanics are innovative-test tubes, metal, chicken wire.

**SPATIAL THRUST DESIGN** - A creative design in which two parallel lines of like plant or man-made material, spaced equidistant from start to finish, are used to define an area of empty space, creating a feeling of thrust.

- May be created with in one or more containers or without a container.
- Thrust may be vertical, diagonal or horizontal and one component may be longer than the other.
- Plant material may be added to the right or left side or both or to the base of the spatial thrust to embellish the space, but not in between the parallel lines.
- Emphasis is on the spatial area between the two main thrusting lines.

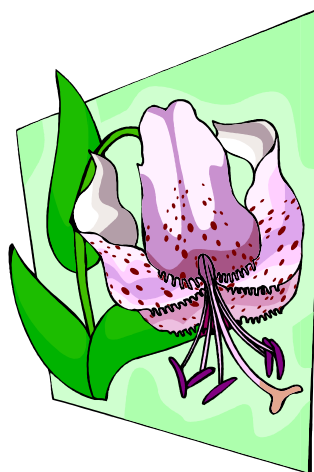
**STRETCH DESIGN** - A creative design using two similar containers, one is smaller and appears to have been pulled away from the other by tension using a connective line of straight line material that is forceful and creative. Stretch component is placed diagonally or horizontally and may be of plant or man-made material, the length of which should approximate the height of the tallest component in the design.

- Stretch components must be imaginative and appear to create tension between the two units and may extend in any direction and may minimally extend beyond the units.
- Staging is best on a pedestal without a background panel.



# Events

\*\*\*Please check the web site for last minute updates & changes



*If you have Events or other news to be included in our newsletter please contact news@arls-lilies.org*

## **ARLS ANNUAL WINTER MINGLE**

**February 2, 2014 2 - 5 PM**  
**14325 96 Ave, Crestwood Hall**  
**Edmonton, AB**

## **ARLS 19th MARTAGON SHOW**

**July 5 & 6, 2014**  
**Devonian Botanic Gardens**  
**Parkland County, AB**

## **ARLS 29th ANNUAL SHOW**

**July 19 & 20, 2014**  
**Central Lions Centre**  
**Edmonton, AB**

## **ARLS SAGM & AWARDS**

**October 18, 2014**  
**Location TBA**

## **ARLS ANNUAL GENERAL MEETING**

**April 26, 2014**

**Woodvale Community Facility 4540 - 50 Street Edmonton, AB**

**Meeting 10:00 AM Seminar after lunch**

**non-members - \$5.00 to attend seminar, members - no charge**

**Seminar Speaker: Susan Leblanc (floral design)**

### **ADDRESS:**

Alberta Regional Lily Society  
PO Box 68183 Bonnie Doon  
Edmonton, AB T6C 4G0

December 2013

Copyright © 2013 Alberta Regional Lily Society

All rights reserved.

## **ARLS Affiliates**

Alberta Horticultural Association

[icangarden.com/clubs/aha](http://icangarden.com/clubs/aha)

Calgary Horticultural Society

[calhort.org](http://calhort.org)

Edmonton Horticultural Society

[edmontonhort.com](http://edmontonhort.com)

North American Lily Society

[lilies.org](http://lilies.org)